

Standard Strip Slimline **SW STRIP SL**

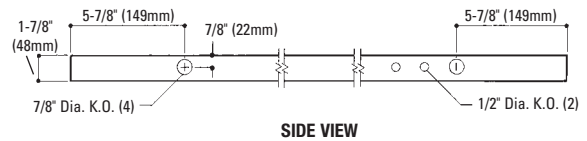
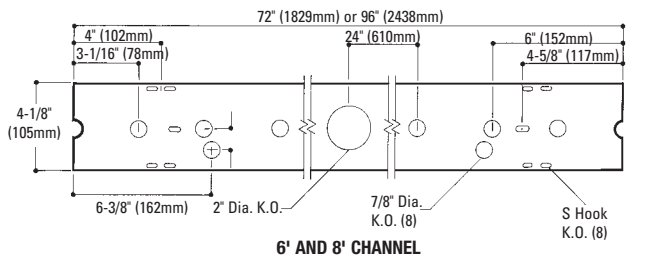
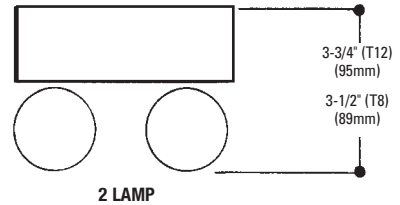
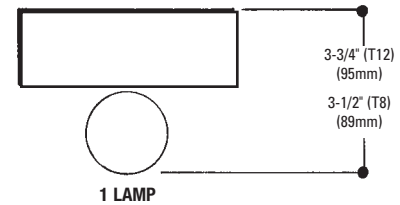
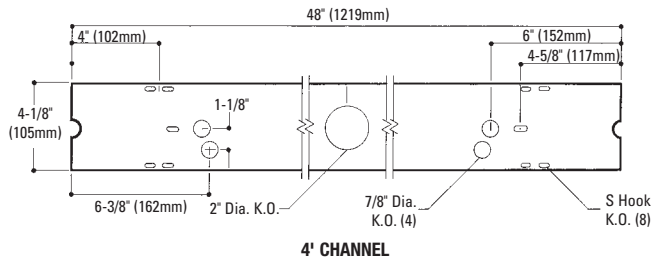
4-1/8" Wide X 1-7/8" Deep X 48", 72", 96" or 192" Lengths
1 or 2 Lamp, T8 or T12, Slimline

Features

- Fixtures suitable for individual, row, surface, or suspension mounting.
- Efficiency 91.0% (T12).
- Quarter turn latch secures channel cover for easy wireway access.
- Heavy duty channel of code gauge die formed steel.
- Fully enclosed wiring.
- U.L. Listed snap-on end caps.
- Combination end cap for continuous row mounting.
- Green grounding screw installed in channel.
- Lampholders may be individually replaced or rewired.
- UL listed for direct mounting on low density ceilings and damp locations.



Dimensions



Job Information Type:

Job Name:

Cat. No.:

Lamp(s):

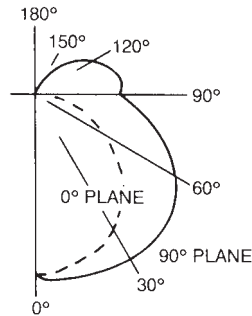
Volts/Ballast:

Standard Strip Slimline **SW STRIP SL**

4-1/8" Wide X 1-7/8" Deep X 48", 72", 96" or 192" Lengths
1 or 2 Lamp, T8 or T12, Slimline

PHOTOMETRY

REPORT NO: G13957P
CATALOG NO: SW8S259SL120SO
LAMP TYPE: F96 / T8
LUMENS PER LAMP: 5500
TOTAL EFFICIENCY: 91.0%
CIE TYPE: SEMI-DIRECT
SPACING CRITERIA: 1.58
SHIELDING ANGLE: 180



LER = FS - 59.5 Watts - 160.0 BF - 0.95
Comparative yearly lighting energy cost per 1000 lumens = \$4.03

coefficients of utilization — zonal cavity method (effective floor cavity reflectance 0.20)

RF	20			50			30		
RC	80			80			30		
RW	70	50	30	50	30	10	50	30	10
1	93	87	83	88	84	79	76	73	70
2	83	75	68	79	71	65	65	60	55
3	75	65	56	71	62	54	56	50	45
4	68	57	48	65	54	46	49	43	38
5	62	50	41	59	48	40	44	37	32
6	57	45	36	54	43	35	39	33	27
7	53	40	32	50	39	31	36	29	24
8	49	36	28	47	35	28	32	26	21
9	46	33	26	44	32	25	30	23	19
10	43	31	23	41	29	22	27	21	17

Ordering Information

Explanation of Catalog Number. Example: SW8S259SLUNVHI

SW	[]	[]	[]	[]	[]	[]	-	[]
STANDARD STRIP SLIMLINE: 4-1/8" Wide Channel	FIXTURE LENGTH: 4-48" 6-72" 8-96" 16-192"	LAMP CONFIGURATION: S=Standard T=For 192" units, 1 or 2 Lamps in Tandem ONLY	NUMBER OF LAMPS IN WIDTH: (By Others) 1=1 Lamp 2=2 Lamp	LAMP WATTS: 59SL=59w T8 Slimline (8' Length) 48SL=38w T12 Slimline (14' Length) 72SL=55w T12 Slimline (6' Length) 96SL=75w T12 Slimline (8' Length)	VOLTAGE: 120, 277 or UNV UNV T8 ONLY	BALLAST TYPE: Electronic T12 1-1 & 1-2 Lamp Elec. T8 1-4 Lamp Elec. T8 *Instant Start Standard Other dimming options. Consult factory.		OPTIONS: Add appropriate suffix to catalog no., ie: (A)

Options/Accessories

Fusing: Internal fast blow fusing: SUFFIX: **A**.
Internal slow blow fusing: SUFFIX: **C**.

Electrical Wiring Options: Consult factory.

STEM AND CANOPY SETS: Suspends fixture 6", 12", 18" or 24" from surface. Order Catalog Number: **ASC6 CSP** (6"), **ASC12 CSP** (12"), **ASC18 CSP** (18"), **ASC24 CSP** (24").

CANOPY SPACER: Suspends fixture 1-1/2" from surface. Order Catalog Number: **AC1 CSP**.

GROUNDING CONVENIENCE OUTLET: 120 volt only. SUFFIX: **CO**.

4' WIRE GUARD (WHITE): Specify two for 96" fixtures. Catalog Number: **AWG3W CSP**.

CHAIN HANGING KIT: Includes two 5' heavy duty link chains with sturdy "V" hooks for fixture suspension. Catalog Number: **AH5 CSP**.

TWIST TEE: For exposed T-bar mounting, 1-7/8" deep channel. Catalog Number: **NAH3 CSP**.
HEAVY DUTY COUPLER: Catalog Number: **NHDC-W CSP**.
SLIDING HANGER: Catalog Number: **NAHW CSP**.



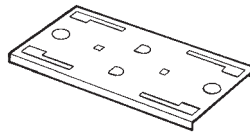
STEM AND CANOPY SET
ASC6 CSP (6")



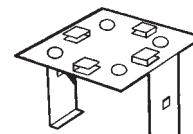
CANOPY SPACER
AC1 CSP



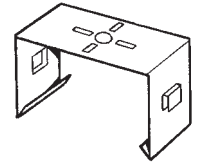
CHAIN HANGING KIT
AH5 CSP



HEAVY DUTY COUPLER
NHDC-W CSP



TWIST TEE
NAH3 CSP



SLIDING HANGER
NAHW CSP

Specifications

MATERIALS: Chassis parts-are die-formed heavy gauge cold rolled steel, 4-1/8" channel width.

BALLAST COVER: Code gauge steel secured with quarter turn latch.

FINISH: Chassis exterior-phosphate undercoating, baked white polyester enamel.

ELECTRICAL: Thermally protected class "P" ballast C.B.M. approved, non-PCB. If K.O. is within 3" of ballast, use wire suitable for at least 90°.

Labels: I.B.E.W./UL and ULc Listed.

This product may have a mercury containing lamp.

Manage in accord with Disposal Laws. See: www.lamprecycle.org

Job Information

Type: