

# QVE2GGLOS2FT

2 x 40W

## ALTER ELEGANCE

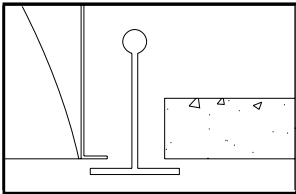
2' X 2' RECESSED DIRECT/INDIRECT FLUORESCENT  
2 LAMP, TT5 BI-TUBE, 3 1/2" DEEP  
GLASS LAMP SHIELD  
STATIC

- Efficiency 55.1%.
- Elegant swing down ridged glass on aluminium extruded hinge lamp shields for easy relamping and maintenance.
- Only 3 1/2" deep.
- Fully recessed luminaire and lamp compartment.
- 95% Reflective Alter soft white paint finish.
- Specular interior reflector.
- One piece body for easy installation.
- Easy access to ballast through lamp compartment.
- Fits standard T-Grid ceilings.

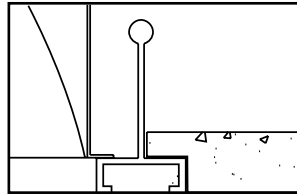


### MOUNTING METHODS/FEATURES

Ceiling compatibility

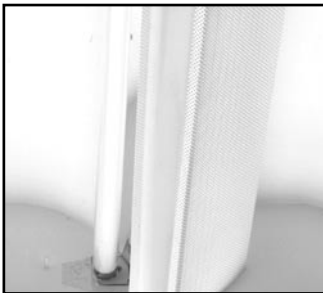


Suited to standard exposed T-grid ceilings



Suited to standard exposed Slot T-grid ceilings

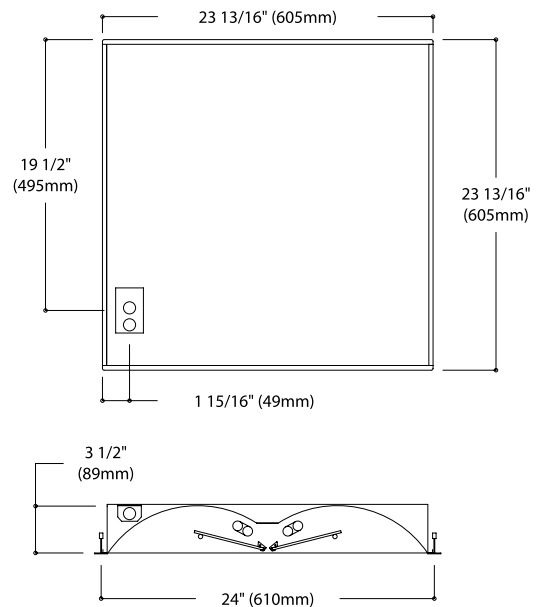
Swing down optical system for easy relamping and maintenance



Ridged glass lamp shields



### DIMENSIONS



FIXTURE TYPE \_\_\_\_\_ VOLTS \_\_\_\_\_

\_\_\_\_\_

\_\_\_\_\_

\_\_\_\_\_

JOB INFORMATION: \_\_\_\_\_

\_\_\_\_\_

\_\_\_\_\_

\_\_\_\_\_

\_\_\_\_\_

\_\_\_\_\_

# QVE2GGLOS2FT

## ALTER ELEGANCE

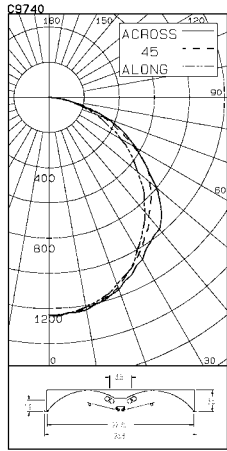
2' X 2' RECESSED DIRECT/INDIRECT FLUORESCENT

CERTIFIED TEST REPORT NO. LSC9740  
COMPUTED BY LSC PROGRAM \*\*TEST-LITE\*\*

LIGHTOLIER-CFI 2x2 RECESSED LUMINAIRE CAT. NO. QVE2GGLOS2FT120SB  
WITH WHITE PAINTED REFLECTORS, SILVER BALLAST COVER, AND GLASS LAMP SHIELDS  
TWO 40W BIAX COMPACT FLUORESCENT LAMPS. LUMEN RATING = 3150 LMS.  
ONE UNIVERSAL TRIAD 120V 1 OR 2-LAMP ELECTRONIC BALLAST NO. C240S1120RH

LIGHTING SCIENCES CANADA LTD.  
440 PHILIP ST., UNIT 19  
WATERLOO, ONTARIO

CERTIFIED TEST REPORT NO. LSC9740  
COMPUTED BY LSC PROGRAM \*\*TEST-LITE\*\*



ANGLE	ALONG	45	45	67.5	ACROSS	OUTPUT LUMENS
0	1236	1236	1236	1236	1236	
5	1232	1235	1228	1236	1230	119
10	1209	1212	1215	1223	1226	
15	1178	1186	1187	1195	1197	334
20	1130	1140	1148	1150	1162	
25	1085	1083	1088	1108	1113	502
30	1004	1009	1025	1052	1064	
35	929	937	956	984	1006	603
40	849	861	883	939	977	
45	767	770	821	896	904	636
50	660	687	747	789	800	
55	571	587	679	667	673	569
60	471	504	554	554	573	
65	368	418	433	455	471	428
70	282	329	334	346	358	
75	189	218	233	218	211	231
80	104	113	119	109	123	
85	33	43	42	43	47	51
90	0	0	0	0	0	

ZONAL LUMENS AND PERCENTAGES

ZONE	LUMENS	% LAMP	% LUMINAIRE
0-30	955	15.17	27.50
0-40	1558	24.74	44.87
0-60	2764	43.87	79.57
0-90	3473	55.14	100.00
40-90	1915	30.40	55.13
60-90	709	11.26	20.43
90-180	0	.00	.00
0-180	3473	55.14	100.00

\*\* EFFICIENCY = 55.1% \*\*

LUMINAIRE SUMMARY-CD. / SQ. M.

ANGLE	ALONG	45	ACROSS
45	3214	3453	3801
55	2950	3520	3488
65	2579	3048	3314
75	2157	2669	2419
85	1137	1420	1592

S/MH = 1.3  
SC (ALONG) = 1.2, SC (ACROSS) = 1.3  
CERTIFIED BY: \_\_\_\_\_ DATE: MAY 16, 2003  
PREPARED FOR: \_\_\_\_\_  
LIGHTOLIER-CFI  
CORNWALL, ONTARIO

TESTED ACCORDING TO IES PROCEDURES. TEST DISTANCE EXCEEDS FIVE TIMES THE GREATEST LUMINOUS OPENING OF LUMINAIRE.

LIGHTOLIER-CFI 2x2 RECESSED LUMINAIRE CAT. NO. QVE2GGLOS2FT120SB  
WITH WHITE PAINTED REFLECTORS, SILVER BALLAST COVER, AND GLASS LAMP SHIELDS  
TWO 40W BIAX COMPACT FLUORESCENT LAMPS. LUMEN RATING = 3150 LMS.  
ONE UNIVERSAL TRIAD 120V 1 OR 2-LAMP ELECTRONIC BALLAST NO. C240S1120RH

COEFFICIENTS OF UTILIZATION

ZONAL CAVITY METHOD

EFFECTIVE FLOOR CAVITY REFLECTANCE = .20

CC WALL	80	70	50	30	10	0													
70	50	30	10	70	50	30	10	50	30	10	50	30	10	50	30	10	0		
RCR	0	.66	.66	.66	.66	.64	.64	.64	.64	.61	.61	.61	.59	.59	.59	.56	.56	.56	.55
1	.60	.58	.56	.54	.59	.57	.55	.53	.54	.53	.51	.52	.51	.50	.50	.49	.48	.47	.47
2	.55	.51	.48	.45	.54	.50	.47	.44	.48	.46	.43	.47	.44	.42	.45	.43	.41	.40	.40
3	.51	.45	.41	.38	.49	.45	.41	.38	.43	.40	.37	.41	.39	.36	.40	.36	.36	.34	.34
4	.47	.41	.36	.33	.46	.40	.36	.32	.39	.35	.32	.37	.34	.32	.36	.33	.31	.30	.30
5	.43	.36	.32	.28	.42	.36	.31	.28	.35	.31	.28	.33	.30	.27	.32	.30	.27	.26	.26
6	.40	.33	.28	.24	.39	.32	.27	.24	.31	.27	.24	.30	.27	.24	.29	.26	.24	.23	.23
7	.36	.29	.24	.21	.36	.29	.24	.21	.28	.24	.21	.27	.23	.21	.26	.23	.20	.19	.19
8	.34	.26	.22	.19	.33	.26	.22	.19	.25	.21	.18	.25	.21	.18	.24	.21	.18	.17	.17
9	.31	.24	.19	.16	.31	.24	.19	.16	.23	.19	.16	.22	.19	.16	.22	.18	.16	.15	.15
10	.29	.22	.17	.15	.28	.22	.17	.15	.21	.17	.14	.20	.17	.14	.20	.17	.14	.13	.13

DETERMINED IN ACCORDANCE WITH CURRENT IES PUBLISHED PROCEDURES  
LUMINAIRE INPUT WATTS = 63.1  
LABORATORY RESULT MAY NOT BE REPRESENTATIVE OF FIELD PERFORMANCE.  
BALLAST FACTORS HAVE NOT BEEN APPLIED.

### ORDERING INFORMATION Explanation of Catalogue Number Example: QVE2GGLOS2FT120SB

<b>QVE</b>	<b>2</b>	<b>G</b>	<b>GL</b>	<b>OS</b>	<b>2</b>	<b>FT</b>	<b>120</b>	<b>SB</b>	
------------	----------	----------	-----------	-----------	----------	-----------	------------	-----------	--

**ALTER ELEGANCE**  
Recessed direct indirect soft light optical system

**FIXTURE WIDTH**  
2'

**CEILING TYPE**  
Standard exposed T-grid ceilings

**LAMP SHIELD**  
GL = Glass OS = Open slot (no acrylic)

**LAMP SHIELD DETAILS**

**LAMP QUANTITY**

**LAMP/FIXTURE LENGTH (NOMINAL 24")**  
FT = TT5 Bi-tube

**VOLTAGE**  
120, 277 347

**OPTIONS**  
R = Radio Interface Filter  
O = Emergency Lighting System (for Canada)  
N = Emergency Lighting System (for U.S.)

BALLAST TYPE

- BE = 50W Electronic TT5 RS
- SR = 40W Electronic TT5 RS
- BX = 40W Magnetic TT5 RS
- PB = 40W TT5 PowerSpec Dimming\*
- PC = 50/55W TT5 PowerSpec Dimming\*
- SB = 40W Genetic Electronic TT5

\*Not available in 347V.

### SPECIFICATIONS

**MATERIALS:** One piece chassis constructed from die formed 20 gauge cold rolled steel. **Optic** - 95% reflectance baked white acrylic matte paint finish. Specular aluminum interior reflector. Ridged tempered glass lamp shield.

**FINISH:** Chassis exterior - phosphate undercoating, baked white acrylic matte paint finish.

**ELECTRICAL:** Rapid start HPF, thermally protected class "P" ballast (Bi-tube type). If K.Os are within 3" of ballast use wire suitable for at least 90C.  
**LABELS:** Listed by CSA, UL

We reserve the right to change, materials and finish in any way that will not alter installed appearance or reduce function and performance.

Genlyte Thomas Company

631 Airport Road, Fall River, MA 02720 - Tel. (508) 679-8131  
C.F.I. Division of Canlyte, Inc.  
525 Education Road, Cornwall, Ontario  
Canada K6H 6C7 - (613) 938-6221