

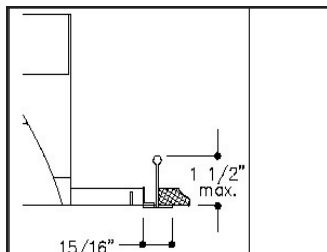
Features

- Efficiency 58.5%
- Full-length air slot with right angle stiffener for maximum rigidity and no slot interference.
- Dual swing down microperforated lamp shields separated by luminous strip for easy relamping and maintenance.
- Alter soft white film on inside of mesh conceals lamp image providing balance between reflected and direct light.
- Fully recessed luminaire and with two separate lamp compartments.
- 95% Reflective Alter soft white paint finish.
- Specular interior reflector.
- One piece body for easy installation.
- Easy access to ballast through lamp compartment.
- Fits standard T-Grid ceilings.
- Optional acrylic drop-down visual element.



Mounting Methods / Features

Ceiling compatibility

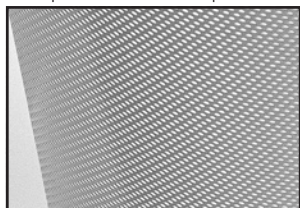


Suited to standard exposed T-grid ceilings

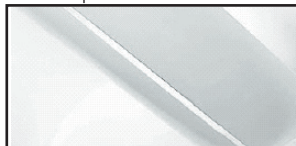
Swing down optical system for easy relamping and maintenance



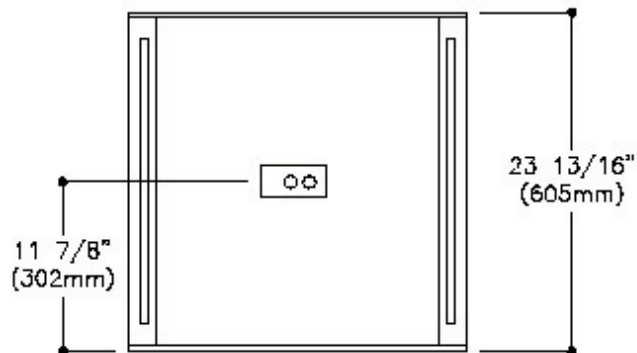
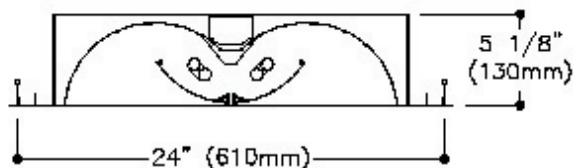
Microperforated mesh lamp shields



Also available with solid opaque swing-down lamp shield



Dimensions



Job Information

Type:

Job Name:

Cat. No.:

Lamp(s):

Volts/Ballast:

Lightolier a Genlyte Thomas Company

www.lightolier.com

Technical Information: (978) 657-7600 • Fax (978) 658-0595

631 Airport Road, Fall River, MA 02720 • (508) 679-8131 • Fax (508) 674-4710

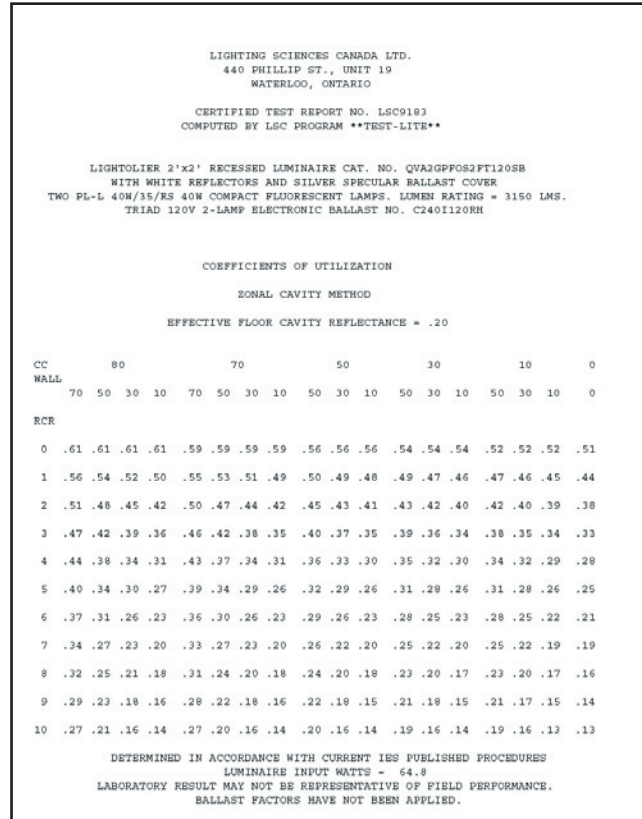
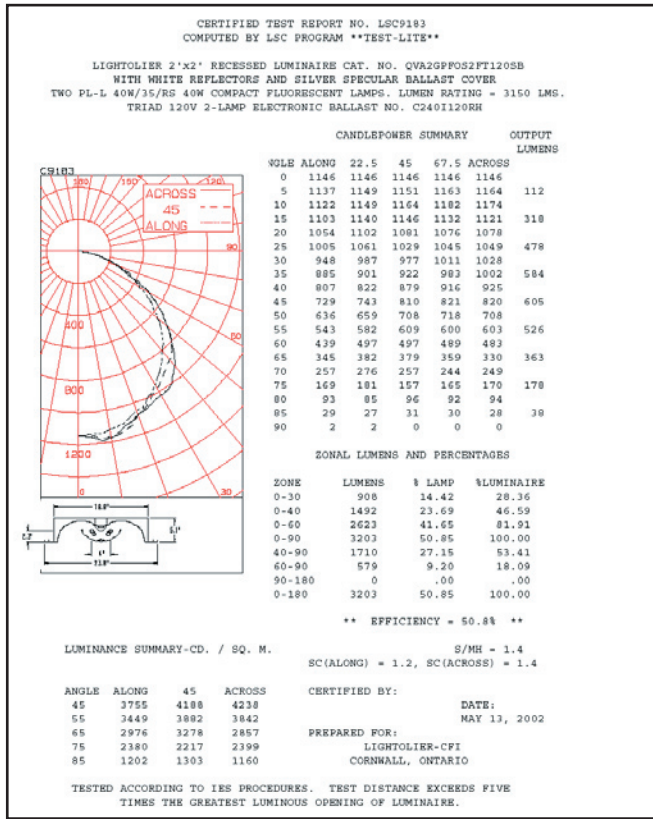
We reserve the right to change details of design, materials and finish.

© 2002 Genlyte Thomas Group LLC (Lightolier Division)

B0403

Folio L10-26

LIGHTOLIER®



ORDERING INFORMATION Explanation of Catalogue Number Example: QVA2GPFOS2FT120SB

QVA	2	G		2	FT			
QUALITY VISUAL AIR	FIXTURE WIDTH	CEILING TYPE	LAMP SHIELD	LAMP QUANTITY	LAMP/FIXTURE LENGTH	VOLTAGE	OPTIONS	
Recessed direct indirect soft light optical system	2'	Standard exposed T-grid ceilings	PF=Micro-perforated SD=Solid		(NOMINAL 24") FT = TT5 bi-tube	120,277 347	R = Radio Interference Filter O = Emergency Lighting System (for Canada) N = Emergency Lighting System (for U.S.)	
			CLEAR POLISHED ACRYLIC DROP DOWN VISUAL ELEMENT				BALLAST TYPE	
			OS=Open slot (no acrylic) OP=One Piece (no center slot) GC=Clear acrylic GG=Clear acrylic / Green projected color face GB=Clear acrylic / Blue projected color face GR=Clear acrylic / Red projected color face				BE = 50W Electronic TT5 RS BR = 40W Electronic TT5 RS BX = 40W Magnetic TT5 RS PB = 40W TT5 PowerSpec* SB = 40W Generic Electronic TT5	
							*Not available in 347V. For other ballast options, consult ballast specification sheet (folio BA-1-02)	

SPECIFICATIONS

Materials: One piece chassis constructed from die formed 20 gauge cold rolled steel. Reflectors - 95% reflectance baked white acrylic matte paint finish. Specular aluminum interior reflector. Soft white acrylic film on inside of lamp shield conceals lamp image.

Finish: Chassis exterior - phosphate undercoating, baked white acrylic matte paint finish.

Electrical: Rapid start HPF, thermally protected class "P" ballast (Bi-tube type). If K.O.s are within 3" of ballast use wire suitable for at least 90C.

Labels: Listed by



Job Information

Type:

Lightolier a Genlyte Thomas Company www.lightolier.com
Technical Information: (978) 657-7600 • Fax (978) 658-0595
631 Airport Road, Fall River, MA 02720 • (508) 679-8131 • Fax (508) 674-4710
We reserve the right to change details of design, materials and finish.
© 2002 Genlyte Thomas Group LLC (Lightolier Division)
B0403

Folio L10-26

LIGHTOLIER®