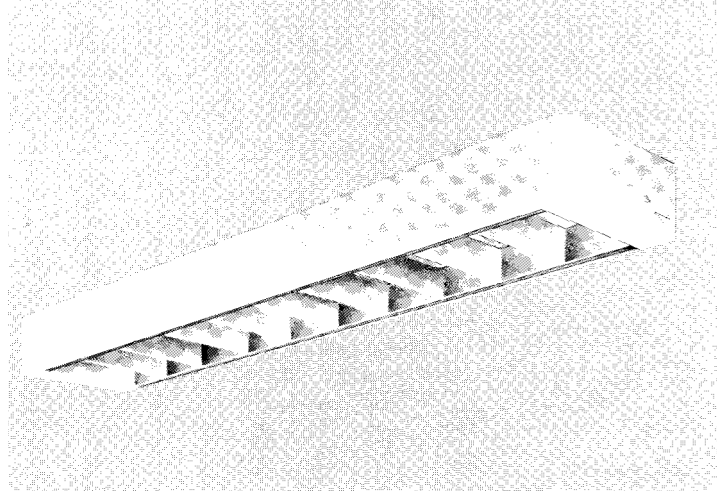


# PARALYTE S/P PLM/PLJ SERIES Downlight

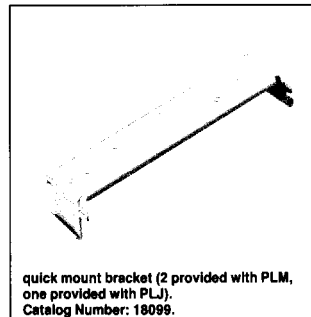
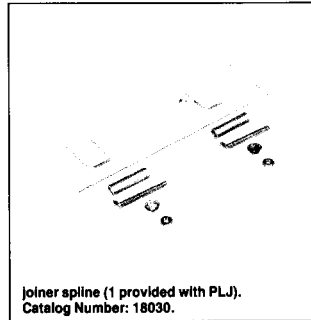
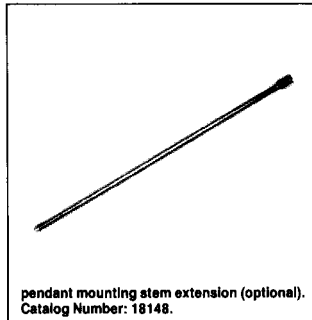
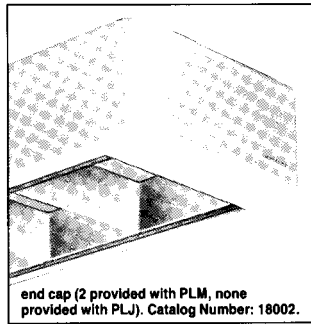
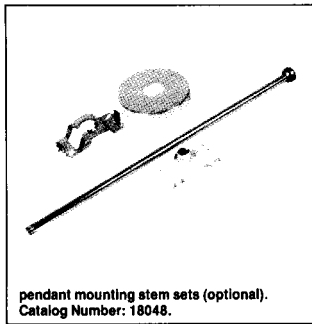
DOWNLIGHT, SURFACE/PENDANT, 4-5/8" DEEP, 10" WIDE, 48" OR 96" NOMINAL LENGTHS, 2 LAMP RAPID START OR T8

## Features

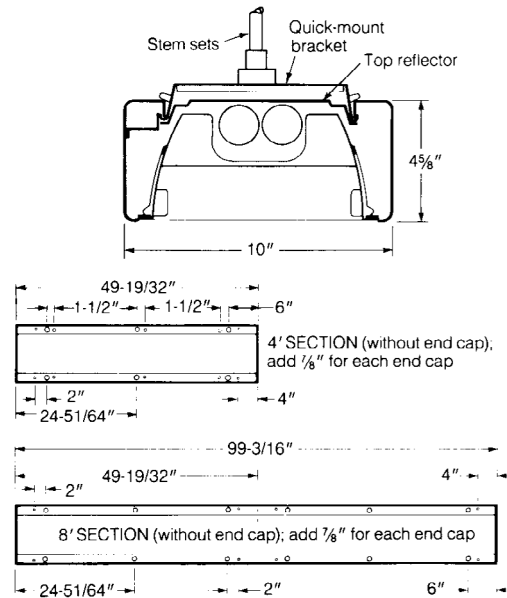
- For nursing homes, hospitals and other health care facilities.
- Separate lamp compartments for controlled uplight and downlight.
- Four-way pull switch, standard (120 volt only).
- 20 gauge steel body, extruded aluminum fascia assembly, die-cast aluminum ends,
- Convenience outlet and K.O.'S provided for left or right assembly,
- Acrylic pattern 12 refractors.
- Fascia hinged to open upward for easy lamp replacement
- Semi-gloss, off-white acrylic baked enamel exterior finish, standard,
- Optional oak fascia Insert,
- Optional low voltage electronic sequential switch for push button control of up/down lighting. UL 544 listed.
- Includes phone jack type receptacle (available 10/1/94).



## MOUNTING METHODS/FEATURES



## DIMENSIONS



## Job Information

## Type:

**Job Name:**

**Cat. No.:**

**Lamp(s):**

**Volts/Ballast:**

Lightolier a Genlyte Thomas Company

www.lightolier.com

Technical Information: (978) 657-7600 • Fax (978) 658-0595

631 Airport Road, Fall River, MA 02720 • (508) 679-8131 • Fax (508) 674-4710

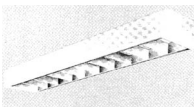
We reserve the right to change details of design, materials and finish.

© 2002 Genlyte Thomas Group LLC (Lightolier Division)

A0902

SECTION 5/Folio K30-12

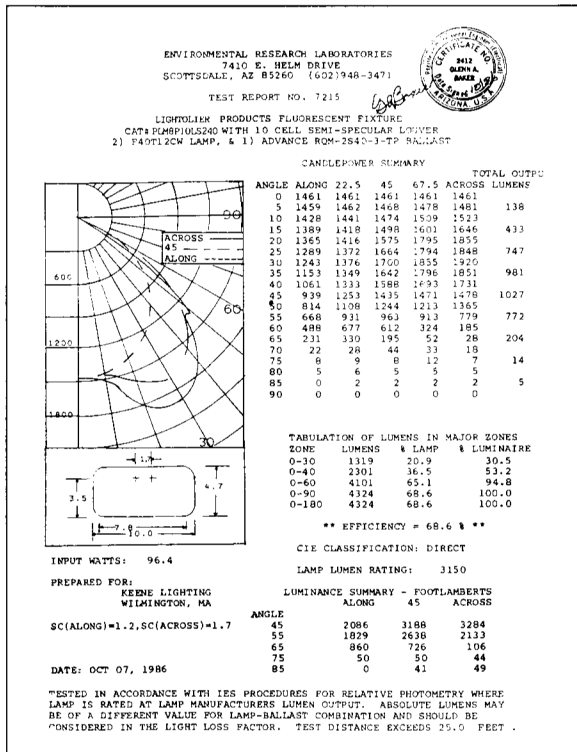
LIGHTOLIER®



# PARALYTE S/P PLM/PLJ SERIES Downlight

DOWNLIGHT, SURFACE/PENDANT, 4-5/8" DEEP, 10" WIDE, 48" OR 96" NOMINAL LENGTHS, 2 LAMP RAPID START OR T8

## PHOTOMETRY



## MODEL NO. PLM8P10LS240

coefficients of utilization — zonal cavity method

RF	20			50			80			
RC	80			50			30			
RW	70	50	30	50	30	10	50	30	10	
room cavity ratio	1	77	74	72	70	68	67	67	66	65
	2	71	67	63	64	59	58	61	59	57
	3	66	61	56	57	54	51	56	53	50
	4	61	54	49	52	48	44	50	47	44
	5	56	48	43	46	42	38	45	41	38
	6	52	43	38	42	37	33	40	36	33
	7	48	39	33	37	32	29	36	32	29
	8	44	35	29	33	29	25	32	28	25
	9	40	31	25	30	25	21	29	24	21
	10	37	28	22	27	22	19	26	22	19

visual comfort probability (VCP) average 100 fc, reflectances 80/50/20

room size		ceiling height			ceiling height				
W	L	8.5	10.0	13.0	16.0	8.5	10.0	13.0	16.0
20	20	63	54	51	59	72	60	52	52
20	30	68	59	51	52	76	64	58	54
20	40	70	63	57	51	77	68	64	59
20	60	72	65	51	56	78	70	67	63
30	20	70	61	50	55	78	65	53	50
30	30	74	66	54	54	81	69	59	53
30	40	75	69	59	50	81	73	64	58
30	60	76	71	63	54	81	73	68	62
30	80	76	71	65	58	83	75	69	65
40	20	70	63	56	56	78	65	58	51
40	30	75	69	59	51	81	71	64	54
40	40	76	72	64	52	81	74	68	58
40	60	77	73	68	56	82	75	71	62
40	80	77	73	69	60	84	77	72	65
40	100	77	73	71	62	84	79	74	67
60	30	76	69	62	52	82	71	65	57
60	40	78	73	67	56	82	75	70	61
60	60	79	74	70	60	83	75	73	65
60	80	79	74	71	64	85	78	74	68
60	100	80	75	73	65	85	79	75	69
100	40	79	74	67	57	83	76	70	61
100	60	80	76	71	62	84	78	74	66
100	80	81	77	73	66	85	79	75	69
100	100	82	77	74	68	86	81	76	71

## ORDERING INFORMATION Explanation of Catalog Number Example: PLM8P10LS240120LEGLR

<b>PL</b>		<b>8</b>		<b>10</b>		<b>S</b>	<b>2</b>				
<b>PARALYTE S/P:</b> Surface/Pendant with 2" Deep Parabolic Precision Contoured Pre-anodized Aluminum Louver	<b>BODY STYLE:</b> M=Individual Module J=Joiner Module	<b>8" WIDE LOUVER</b>	<b>FIXTURE MOUNTING:</b> P=Pendant S=Surface	<b>NUMBER OF CELLS:</b> 10 (48" Length)	<b>LOUVER FINISH:</b> L=Low Iridescence Semi-specular (standard) S=Specular P=Low Iridescence Specular	<b>TOP REFLECTOR:</b> S=White Baked Enamel	<b>LAMP QUANTITY</b>	<b>LAMP/ FIXTURE LENGTH:</b> 40=(Nominal 48") 42=(Nominal 96") 2-48" Lamps in tandem	<b>VOLTAGE:</b> 120 or 277	<b>BALLAST TYPE:</b> LE=Energy Saving OC=Octic SS=Electronic SO=Electronic Octic	<b>OPTIONS:</b> Add appropriate suffix to catalog no., ie: (GLR)

\*Consult factory for availability of louver finishes.

## OPTIONS/ACCESSORIES

**STEM SETS:** 1/2" diameter tubing, 18" long, chrome plated finish. **CATALOG NUMBER:** 18048

**STEM EXTENSION KIT:** 18" extension. **CATALOG NUMBER:** 18148.

**ELECTRICAL/WIRING OPTIONS:** Consult factory

**FUSING:**

Internal fast-blow fusing. SUFFIX: **GLR**.

Internal slow-blow fusing. SUFFIX: **GMF**.

## SPECIFICATIONS

**PERFORMANCE:** In an installation of 2 lamp 40W luminaires with a room cavity ratio of 1, with reflectance 801% ceiling, 500/0 wall, 200/0 floor, the C,U, shall be not less than .74. To reduce glare the VCP shall be not less than 79 either length-wise or crosswise (at 100fc level) and the average brightness at 65° shall not exceed 860 footlamberts. To control veiling reflections, luminaire output in the 30°-90° zone shall be not less than 69.5%

**MATERIALS: Chassis parts** are die-formed 20 gauge code cold rolled steel, End caps are die-cast aluminum with soft rounded corners.

**LOUVER:** Pre-anodized aluminum (Coilzak® or equal).

## SPECIFICATIONS (continued)

**FINISH: Louver**— low iridescence semi-specular anodized aluminum (standard). **Chassis exterior**— semi-gloss off-white baked enamel, **Cavity**— white baked enamel. Phosphate undercoating.

**ELECTRICAL:** Rapid start HPF, LE (energy saving where applicable) thermally protected class "P" ballast C. B. M. certified by E.T. L. If K.O. is within 3" of ballast, use wire suitable for at least 90°

**LABELS:** I.B.E.W./UL and C-UL.

## Job Information Type:

**Lightolier** a Genlyte Thomas Company [www.lightolier.com](http://www.lightolier.com)  
Technical Information: (978) 657-7600 • Fax (978) 658-0595  
631 Airport Road, Fall River, MA 02720 • (508) 679-8131 • Fax (508) 674-4710  
We reserve the right to change details of design, materials and finish.  
© 2002 Genlyte Thomas Group LLC (Lightolier Division)  
A0902 **SECTION 5/Folio K30-12**

LIGHTOLIER®