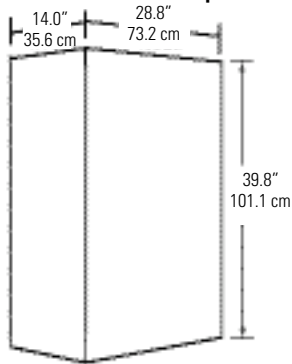




Operates incandescent and electronic ballast loads as well as life safety load devices requiring conditioned power.



	500 VA	750 VA	1000 VA	1250 VA	1500 VA
Cabinet & Electronics	193 lbs. (88 kg)	206 lbs. (493 kg)	206 lbs. (493 kg)	223 lbs. (101 kg)	242 lbs. (110 kg)
Sealed Lead Calcium Batteries	116 lbs. (53 kg)	141 lbs. (64 kg)	232 lbs. (105 kg)	242 lbs. (110 kg)	288 lbs. (131 kg)
Total Unit w/ Batteries	309 lbs. (141 kg)	347 lbs. (157 kg)	438 lbs. (198 kg)	465 lbs. (211 kg)	530 lbs. (241 kg)

### How to Specify:

**L1**

**Series**  
LI = Interruptible Power Supplies

**VA Rating**

500 = 500 VA  
750 = 750 VA  
1000 = 1,000 VA  
1250 = 1,250 VA  
1500 = 1,500 VA

**Voltage Configuration**

Input      Output  
A = 120      120  
B = 277<sup>2</sup>      277<sup>2</sup>  
C = 277<sup>2</sup>      120  
D = 277<sup>2</sup>      120/277<sup>3</sup>

**NOTES:**

- 2) 277 volt applications require IOV option
- 3) Total load shall not exceed system rating

### Overall Characteristics

- 83% throughput efficiency
- Operating temperature range of 32°F (0°C) to 104°F (40°C); 85°F (29°C) maximum for batteries
- 3.5 mS maximum transfer time
- Standard 90 minutes of operating time; other run times optional
- Full-time isolating transformer
- Internal boost compensates for momentary voltage drops
- ANSI/IEEE C62.41 category A & B surge voltage withstand capability

### Housing

- Free standing, NEMA 1 enclosure with locking doors
- Acid resistant powder coat finish
- Multiple conduit entries

### Metering/Controls

- DC battery voltmeter
- AC output voltmeter and ammeter
- AC input breaker
- AC output breaker
- Battery disconnect switch
- Dry contact for remote failure alarm
- AC input and output pilot light
- Automatic battery monitor with alarm
- Normally off load relay
- Complete offering of options

### Battery

Maintenance free, sealed lead calcium battery has an estimated service life of 5 years, and operating temperature range of 65°F (19°C) to 85°F (30°C).

### Electronics

#### Inverter

- Sine wave output
- Completely solid-state PWM inverter
- Inverter output distortion 3% THD (at no load, typical)
- Output voltage regulation ±5% of nominal at full load during emergency operation
- Frequency 60.0 ±0.5 Hz
- Inverter efficiency 80%
- Load power factor capability is 0.5 lagging to unity
- Brownout protection is 80% of nominal line voltage
- Low voltage disconnect (LVD)

### Electronics (continued)

#### Charger

- Battery protecting charge regime
- Transistor controlled
- Recharge time: 24 hours
- Integrated inverter/charger module
- Efficiency: 90% minimum

#### Options

**IOV** = Optional Input-Output Voltage (required for 277 V)

**OCB(#)** = Output Circuit Breakers (quantity)

**OCBA(#)** = Output Circuit Breakers with Trip Alarm (qty)

**MBP** = Maintenance Bypass<sup>1</sup>

**TDT** = Time Delay Timer

**FSU** = Start-up Service

NOTE: 1) Input/output voltage must be the same and single only. Maintenance Bypass option (MBP) is external and break-before-make.

### Job Information

### Type:

**Job Name:**

**Cat. No.:**

**Lamp(s):**

**Notes:**

Lightolier a Genlyte Thomas Company [www.lightolier.com](http://www.lightolier.com)  
631 Airport Road, Fall River, MA 02720 • (508) 679-8131 • Fax (508) 674-4710  
We reserve the right to change details of design, materials and finish.  
© 2002 Genlyte Thomas Group LLC (Lightolier Division) • C0303

**LIGHTOLIER**



MODEL	CAPACITY	INPUT (Select One)		OUTPUT (Select One)		OCB POLE SPACES AVAILABLE	BREAKERS INCLUDED
		AC INPUT VOLTAGES	INPUT AMPS <sup>1</sup>	AVAILABLE OUTPUT VOLTAGES/ MAX. LOAD AMPS <sup>2</sup>			
LI500	500 VA	120 277	5.7 2.8	120 V	277 V	4 4	1 1
				4.2 4.2	1.8 1.8		
LI750	750 VA	120 277	8.6 3.8	6.3 6.3	2.7 2.7	4 4	1 1
LI1000	1,000 VA	120 277	11.4 5.0	8.3 8.3	3.6 3.6	4 4	1 1
LI1250	1,250 VA	120 277	14.2 6.3	10.4 10.4	4.5 4.5	4 4	1 1
LI1500	1,500 VA	120 277	17.6 7.6	12.5 12.5	5.4 5.4	4 4	1 1

**NOTES:**

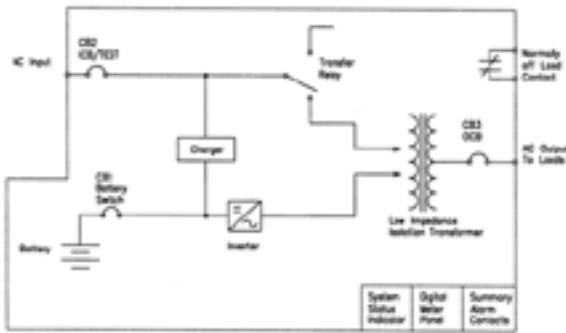
1 Maximum input current

2 Split voltage loads not to exceed system VA rating

**Warranty**

Warranty is for 12 months parts: labor and travel also covered if Factory Start-Up Service (FSU) option is purchased.

**System One-Line Diagram**



Listed to UL 924

**Job Information** **Type:**

Lightolier a Genlyte Thomas Company [www.lightolier.com](http://www.lightolier.com)  
 631 Airport Road, Fall River, MA 02720 • (508) 679-8131 • Fax (508) 674-4710  
 We reserve the right to change details of design, materials and finish.  
 © 2002 Genlyte Thomas Group LLC (Lightolier Division) • C0303

**LIGHTOLIER**