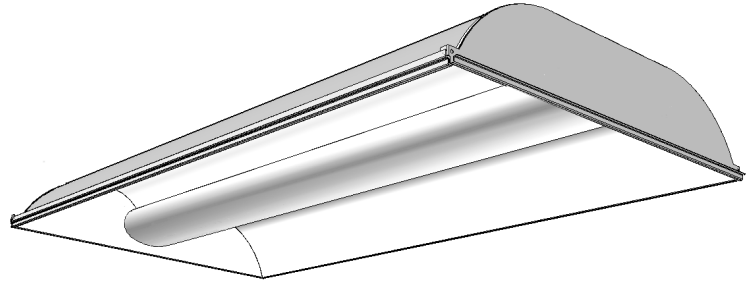


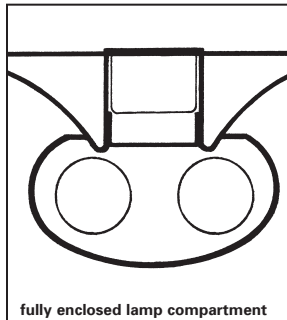
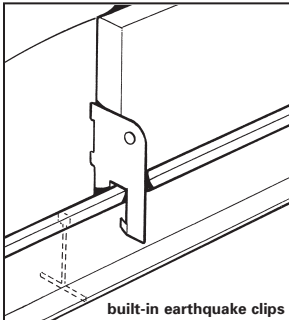
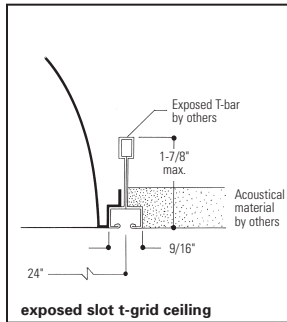
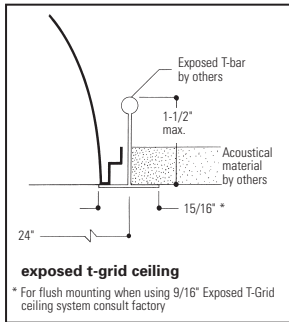
# HP90 Recessed Fluorescent **H9S2GLR132 or 232**

## Features

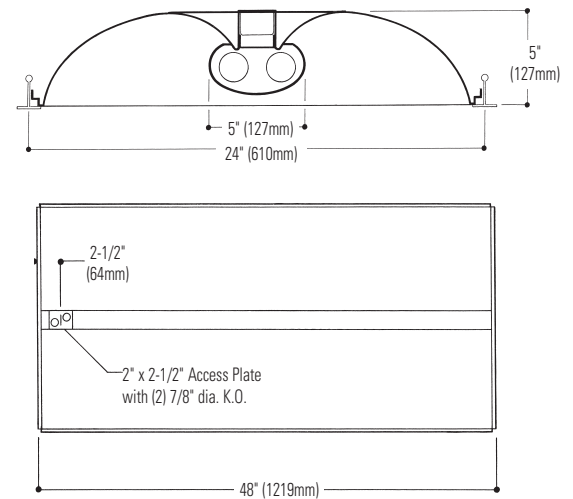
- 85.2% efficient (2 lamp, 32W).
- 85.2% efficient (1 lamp, 32W).
- Direct/indirect appearance with soft contoured interior.
- Lens encloses lamp compartment.
- Translucent DR acrylic high light transmission linear prismatic lens.
- Tension screws secure ends to body.
- Same fixture fits both G and T ceiling types.
- Fits flush to face of slot grid (T) ceiling types.
- Lamp shield opens from either side.
- 95% reflective specular aluminum reflector.
- Ballast accessible from room side.
- Can be continuous row mounted.
- Wiring access plate standard.
- Optional DALI ballast iGEN TECHNOLOGY accepts digital dimming controllers, scene controllers and automatic control devices.
- Construction to meet NYC Code or Chicago Plenum available.



## Mounting Methods



## Dimensions



## Job Information Type:

**Job Name:**

**Cat. No.:**

**Lamp(s):**

**Volts/Ballast:**

# HP90 Recessed Fluorescent H9S2GLR132 or 232

Direct/Indirect – 2' x 4' with Acrylic Linear Prismatic Lens  
Static, 2 Lamp T8

## Model No. H9S2GLR132UNVHI

LER = FP - 74.5 IW - 31.2 BF - 0.88  
Comparative yearly lighting energy cost per 1000 lumens = \$3.22

Report Number: G2010221  
Catalog Number: H9S2GLR132UNVHI  
Lamps: (1) F32 T8  
Luminaire: HP90 2' x 4' with linear prismatic lens.  
Ballast: QTP1X32T8  
Report is based on 3100 Lumens per lamp.  
Efficiency: 85.2%  
CIE Type-Direct-Indirect  
Plane: 0-Deg 90-Deg  
Spacing Criteria: 1.2 1.4  
Shielding Angles: 90 90  
Plane: 0-Deg 90-Deg  
Luminous Length: 46.800 22.800

### CANDELA DISTRIBUTION

	0.0	45.0	90.0	FLUX
0	770	770	770	
5	765	768	771	73
15	736	753	769	213
25	680	720	755	332
35	601	665	723	416
45	499	590	669	454
55	381	497	586	442
65	257	392	514	387
75	136	280	328	266
85	38	47	35	60
90	0	0	0	

### ZONAL LUMEN SUMMARY

ZONE	LUMENS	% LAMP	% FIXT
0- 30	619	20.0	23.4
0- 40	1034	33.6	39.2
0- 60	1930	62.2	73.0
0- 90	2642	85.2	100.0
90-180	0	0.0	0.0
0-180	2642	85.2	100.0

### LUMINANCE DATA IN CANDELA/SQ. METER

AVERAGE IN DEG.	AVERAGE 0-DEG.	AVERAGE 45-DEG.	AVERAGE 90-DEG.
45	1017.	1202.	1363.
55	957.	1248.	1497.
65	876.	1336.	1752.
75	757.	1559.	1826.
85	628.	777.	579.

### COEFFICIENTS OF UTILIZATION – ZONAL CAVITY METHOD. EFFECTIVE FLOOR CAVITY REFLECTANCE 0.20

RC	80	50	30	10	50	30	10
RW 70	50	30	10	50	30	10	74
1	92	87	83	82	79	76	74
2	83	75	69	70	65	61	63
3	75	65	58	61	55	50	54
4	68	57	49	54	47	42	46
5	63	51	43	48	41	36	40
6	58	46	38	43	36	31	36
7	53	41	33	39	32	28	32
8	49	37	30	36	29	24	29
9	46	34	27	33	26	22	26
10	43	32	25	30	24	20	24

## Model No. H9S2GLR232UNVHI

LER = FP - 77.9 IW - 59.7 BF - 0.88  
Comparative yearly lighting energy cost per 1000 lumens = \$3.08

Report Number: G2010039  
Catalog Number: H9S2GLR232UNVHI  
Lamps: (2) F32 T8  
Luminaire: HP90 2' x 4' with linear prismatic lens.  
Ballast: ICN-2P32-SC  
Report is based on 3100 Lumens per lamp.  
Efficiency: 85.2%  
CIE Type-Direct-Indirect  
Plane: 0-Deg 90-Deg  
Spacing Criteria: 1.2 1.4  
Shielding Angles: 90 90  
Plane: 0-Deg 90-Deg  
Luminous Length: 46.800 22.800

### CANDELA DISTRIBUTION

	0.0	45.0	90.0	FLUX
0	1595	1595	1595	
5	1584	1588	1594	151
15	1525	1550	1576	439
25	1409	1473	1538	681
35	1204	1356	1465	849
45	1028	1198	1343	920
55	783	1000	1172	885
65	523	772	973	754
75	267	523	604	497
85	59	90	62	107
90	0	0	0	

### COEFFICIENTS OF UTILIZATION – ZONAL CAVITY METHOD. EFFECTIVE FLOOR CAVITY REFLECTANCE 0.20

RC	80	50	30	10	50	30	10
RW 70	50	30	10	50	30	10	74
1	92	88	84	82	79	76	74
2	83	76	69	71	66	62	64
3	75	66	58	62	56	51	54
4	69	58	50	54	48	43	47
5	63	51	43	49	42	37	41
6	58	46	38	44	37	32	36
7	54	42	34	40	33	28	32
8	50	38	30	36	30	25	29
9	46	35	27	33	27	22	26
10	44	32	25	31	24	20	24

### ZONAL LUMEN SUMMARY

ZONE	LUMENS	% LAMP	% FIXT
0- 30	1271	20.5	24.0
0- 40	2120	34.2	40.1
0- 60	3925	63.3	74.3
0- 90	5284	85.2	100.0
90-180	0	0.0	0.0
0-180	5284	85.2	100.0

### LUMINANCE DATA IN CANDELA/SQ. METER

AVERAGE IN DEG.	AVERAGE 0-DEG.	AVERAGE 45-DEG.	AVERAGE 90-DEG.
45	2095.	2441.	2736.
55	1967.	2512.	2944.
65	1783.	2632.	3317.
75	1486.	2911.	3362.
85	975.	1488.	1025.

## Ordering Information

Explanation of Catalog Number. Example: H9S2GLR232UNVHI

<b>HP90</b> Direct/Indirect Recessed	<b>S</b> Body Style: S = Static	<b>2</b> Fixture Width	<b>G</b> Ceiling Type: Fits both Standard Grid and Slot Grid	<b>L</b> Acrylic Lens	<b>R</b> Reflector: Specular Aluminum	<b>32</b> Lamp Quantity 1=1 Lamp 2=2 Lamp	<b>120, 277 or UNV=120-277</b> Voltage: 120, 277 or UNV=120-277	<b>Ballast Type:</b> <10THD HI* P2† PS	<b>Options:</b> Add appropriate suffix to catalog no., ie: (A)
<b>H9</b> Standard HP90									
<b>HY</b> For NYC Code – I.B.E.W. Manufactured									

\* 28W T8 available

† Program Start  
Other dimming options. Consult factory.  
**NOTE:** For T8 UNV, you must use HI Ballast Code.

## Options/Accessories

**Fusing:** Internal fast blow fusing: SUFFIX: **A**.  
Internal slow blow fusing: SUFFIX: **C**.  
**Drywall Kit:** Order Catalog Number: **FK92X4**.  
**Electrical Wiring Options:** Consult factory.  
**For motion or light sensor.** See Folio OA20-10.

## Specifications

**Performance:** In an installation of 2 lamp 32W luminaires in a room cavity ratio of 1, with reflectance 80% ceiling, 50% wall, 20% floor, the C.U. shall not be less than .88. To reduce glare the average brightness at 65° shall not exceed 3317 candelas per square meter. To control veiling reflections, luminaire output in the 30°-90° zone shall not be less than 76.0%.

**Materials:** Chassis parts are die-formed code gauge steel.  
**Lamp Shield:** Linear prismatic translucent DR acrylic lens.

## Specifications (continued)

**Finish:** Chassis exterior – baked white polyester enamel. **Cavity** – baked white polyester enamel. Rust preventative undercoating. **Reflector** – low iridescence specular aluminum 95% reflectance.  
**Electrical:** Thermally protected class "P" ballast C.B.M. approved, non PCB. If K.O. is within 3" of ballast, use wire suitable for at least 90°.  
UL Listed for damp locations.  
**Labels:** I.B.E.W./UL and ULc Listed.  
This product may have a mercury containing lamp. Manage in accord with Disposal Laws. See: www.lamprecycle.org

## Job Information Type: