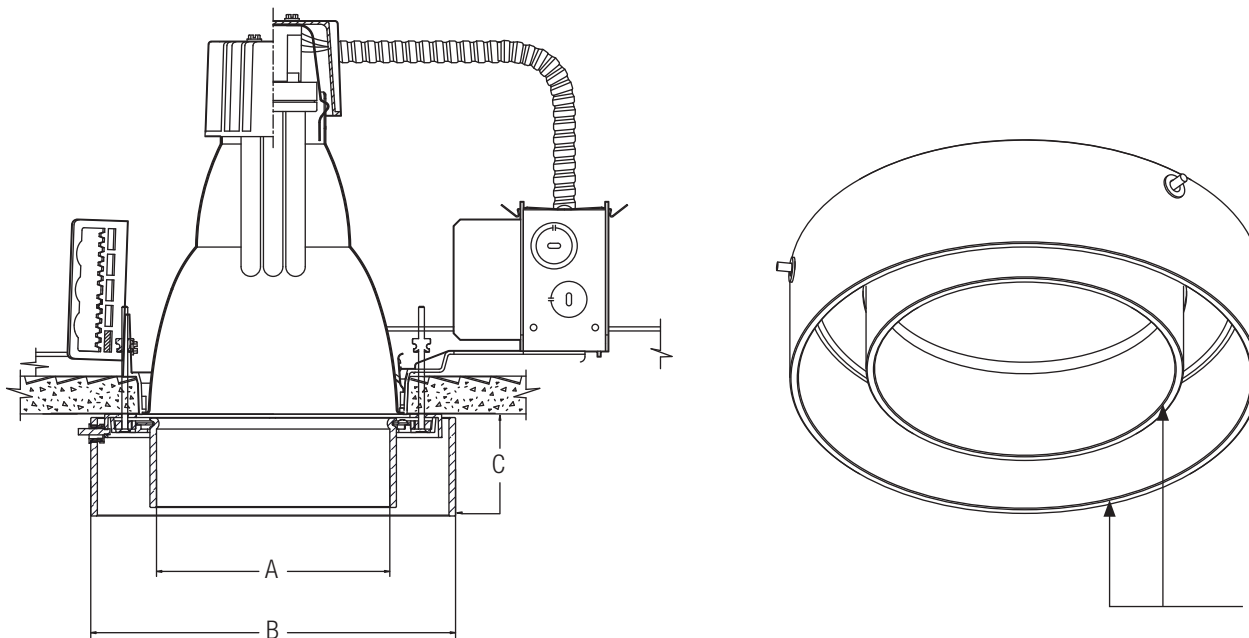


Architectural Decorative Vetro Downlight **DA14**



Complete Fixture consists of Decorative Element, Trim-Kit + Frame-In Kit. Each sold separately.

3 Piece Ordering System, Example: D4A14 + 8011CL + 4118VU

Decorative Element Catalog No.	Trim- Kit	Frame-In Kit	Lamping	Dimensions		
				A	B	C
D4A14	8011CL	4118VU Family D4132VU Family	(1) 18W Triple Tube (1) 26W or 32W Triple Tube	4 1/8"	7 1/4"	2 1/4"
D6A14	8021CL; 8031CL; 8091DCL 8052CL 8051CL	S6132BU Family 6213HU Family 6218HU Family	(1) 26W or 32W Triple Tube (2) 13W Quad (2) 18W Quad	5 1/2"	8 5/8"	2 3/8"
D7A14	8022CL; 8037CL; 8097DCL 8056CL; 8096DCL 8056CL; 8096DCL 8056CL	S7142BU Family 7218HU Family S7226HU Family 7126HU Family	(1) 26W, 32W or 42W Triple Tube (2) 18W Quad Tube (2) 26W Quad Tube (1) 26W Quad Tube	7 1/8"	10 1/4"	2 5/8"

Features

- Decorative Element:** Inner: Cylindrical hand blown triplex glass carefully proportioned to each aperture size. Glass is gently and evenly illuminated for clean brightness recognition. Outer: angled hand blown clear glass.
- Die Cast Finish Ring:** Aluminum Die Cast finish ring with crisp 90 degree edges conceals all fasteners for a clean finished appearance.
- Die Cast Construction Ring:** Internal die cast construction ring is mechanically attached to frame in kit and is concealed by finish ring.
- Mounting Frame Fasteners:** Four #8-32 screws and 4 knurled die-cast thumb screws secure construction ring to frame in kit.
- Reflector:** FLANGELESS TRIM REQUIRED. Specified separately. Use Specular Clear (CL) finish for best performance and aesthetics.
- Frame-In Kit:** Specified separately. See Trim Kit Specification Sheet for additional details.

Mechanical

Die cast construction ring securely fastened to four #8-32 screws and 4 knurled die-cast thumb screws. Decorative Element quarter turn twist and lock into die cast construction ring.

Labels

cULus (Damp Location)

Job Information	Type:
Job Name:	
Cat. No.:	
Lamp(s):	
Notes:	