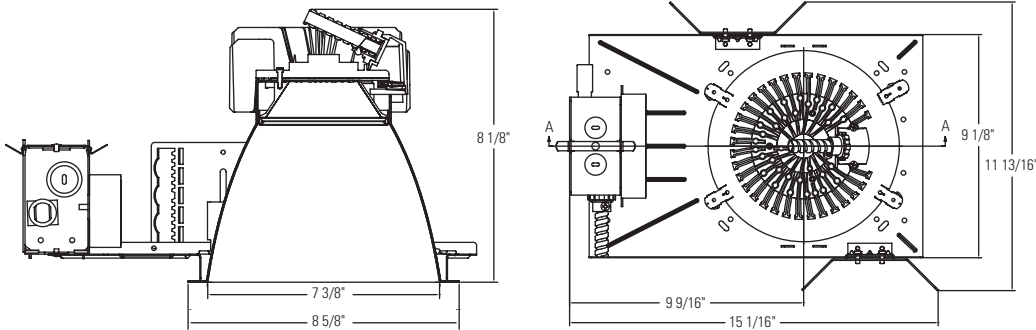


C7L1520DL (W)

Calculite LED 7" Downlight Wide Beam

Page 1 of 4



Flangeless Trim with
Plaster Ring Accessory CA7FMR
(Recommended for
gypsum installations)

Ordering Guide: Light Engines

Light Engine Series	Style	Color Temperature	Beam Spread	Reflector Finish	Flange	Options
C7L1520	DL (Downlight)	27K (2700K) 30K (3000K) 35K (3500K) 40K (4000K)	W (Wide beam, 1.2 s.c.)	CL (Clear) CCL (Comfort Clear) CCD (Comfort Clear Diffuse) CCZ (Champagne Bronze) WH (Painted White)	W (Painted white) P (Aperture-matching/polished) FT (Flush-mount/flangeless) ¹	EM (Integral emergency test switch)

Example: C7L1520DL35KMCCLWEM

¹Accessory CA7FMR recommended for gypsum applications. Reflector flange is 1/8".

Ordering Guide: Frame-in Kits

Frame-in Kit Series	Installation Options	Input Voltage	Options
C7L15 (1500 Lumen) C7L20 (2000 Lumen) C7L35 (3500 Lumen)	N (New construction) R (Remodeler for 1500 and 2000 lumen only)	1 (120V) 2 (277V)	Blank (0-10 volt dimming) EM (Emergency for 1500 and 2000 lumen only)
CUL15 (1500 Lumen) CUL20 (2000 Lumen)	J (J-box mount retrofit) S (Screw-in base retrofit (120V only))	1 (120V) 2 (277V)	Blank (0-10 volt dimming)

Example: C7L15N1EM

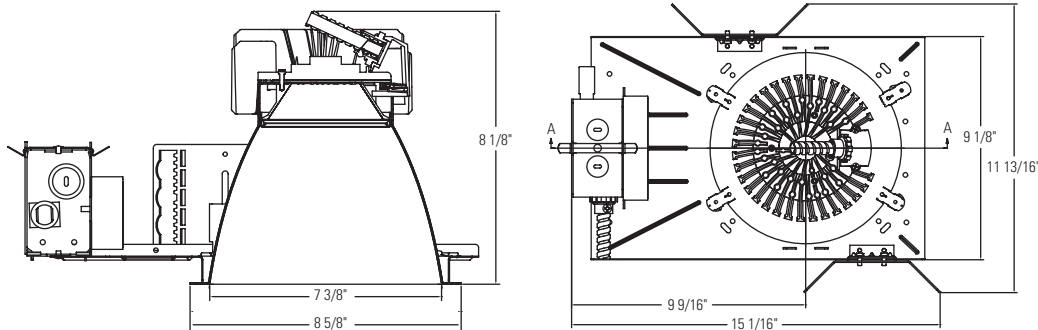
Job Information	Type:
Job Name:	
Cat. No.:	
Notes:	

PHILIPS
LIGHTOLIER

C7L1520DL (W)

Calculite LED 7" Downlight Wide Beam

Page 2 of 4



Flangeless Trim with
Plaster Ring Accessory CA7FMR
(Recommended for
gypsum installations)

Features

Aperture: 7 3/8" (187mm) I.D., 8 5/8" (219mm) O.D.

Input Wattage: 27W (1500 Lumens), 39W (2000 Lumens).

Reflector Cone: Aluminum. Provides 50° cutoff to source & source image. Self-flanged.

Depth (including Frame-in kit): 8 1/8" (206mm)

Power Connection: Attaches to frame-in kit via push-in connector (on frame). Removable cover provides access.

Technology

LED Board: Array of 22 high brightness royal blue LED's.

Remote Phosphor Technology: Remote phosphor technology provides increased efficiency and color consistency.

Phosphor lens assembly positioned in front of LED array converts blue light to white. Color shift will not exceed +/- 100K over life.

Optical Mixing Chamber: Lightolier-specific mixing chamber redirects back-reflected light through aperture resulting in 20% increase in efficiency.

Thermal Management: Heat sink and thermal design along with clean room assembly ensures specified performance.

Rated Life: Based on IESNA LM-80-2008

1500 Lumen – 60,000 hours at 70% lumen maintenance.

2000 Lumen – 57,000 hours at 70% lumen maintenance.

Photometric Performance: Tested in accordance to IESNA LM-79-2008

Options

Dimming Capability: 0-10V. See LED-DIM specification sheet

Emergency Capability (Integral): Add "EM" suffix. See LED-EM spec sheet.

Emergency Capability (Inverter): See LED-LMI specification sheet

Labels

UL (suitable for wet locations), cUL, I.B.E.W.

5 Year Warranty

Job Information	Type:
------------------------	--------------

PHILIPS

LIGHTOLIER

C7L1520DL (W)

Calculite LED 7" Downlight Wide Beam

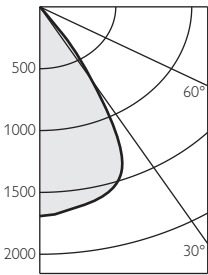
Correlated Color Temperature (CCT) Multipliers

2700K (x 0.92), **3000K** (x 1.00), **3500K** (x 1.07), **4000K** (x 1.14)

Reflector Finish Multipliers

CL (x 1.00), **CCL** (x 0.94), **CCD** (x 0.93), **CCZ** (x 0.76), **WH** (x 0.82) — **CL** & **CCD** finishes are tested. **CCL**, **CCZ** & **WH** are calculated.

1500 LM, 3000K, CL FINISH TRIM



Angle	MeanCP	Lumens
0	1692	
5	1664	158
10	1634	
15	1594	449
20	1518	
25	1300	562
30	768	
35	351	238
40	147	
45	35	37
50	3	
55	1	1
60	1	
65	0	0
70	0	
75	0	0
80	0	
85	0	0
90	0	

Trim: C7L1520DL30KMCLW
Frame: C7L15N1
Output lumens: 1445 lm
CCT¹: 3000K

Input Watts²: 26.6W

Efficacy: 54.3 lm/w

CRI⁴: 78

Spacing Criterion: 0.9

Certified Test Report No: F10022³

Single Unit Data		
Height to Lighted Plane	Initial Footcandles	Beam Diameter
5'	68	6'
6'	47	7'
7'	35	8'
8'	26	9'
9'	21	10'

Multiple Unit Data - RCR 2		
Spacing	Initial Footcandles	Watts/Sq. Ft.
5'	66.5	1.18
6'	43.7	0.77
7'	31.2	0.55
8'	26.0	0.46
9'	20.8	0.37

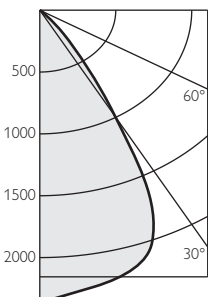
38'x38'x10' Room, Workplane 2 1/2' above floor, 80/50/20% Reflectances

Zonal Lumens & Percentages		
Zone	Lumens	%Luminaire
0-30	1169	80.9%
0-40	1406	97.3%
0-60	1445	100.0%
0-90	1445	100.0%

Ceiling	80%				70%				50%				30%				0%
	70	50	30	10	50	10	50	10	50	10	50	10	50	10	50	10	
Wall	70	50	30	10	50	10	50	10	50	10	50	10	50	10	50	10	
RCR	Zonal Cavity Method - Effective Floor Cavity Reflectance = 20%																
0	119	119	119	119	116	116	111	111	106	106	100						
1	114	111	109	107	109	105	105	102	101	99	94						
2	109	104	100	97	102	96	99	94	96	92	88						
3	104	98	93	89	96	88	94	87	91	86	83						
4	99	92	87	83	91	82	88	81	86	80	78						
5	94	86	81	77	85	76	84	76	82	75	73						
6	90	81	76	72	81	71	79	71	78	71	69						
7	86	77	71	67	76	67	75	67	74	66	65						
8	82	73	67	63	72	63	71	63	70	63	61						
9	78	69	63	60	68	59	67	59	67	59	58						
10	75	65	60	56	65	56	64	56	63	56	54						

1. Correlated Color Temperature within specs as defined in ANSLI_NEMA_ANSI C78.377-2008: Specifications for the Chromaticity of Solid-State Lighting Products.
2. Wattage controlled to within 5%.
3. Tested using absolute photometry as specified in LM79: IESNA Approved Method for the Electrical and Photometric Measurements of Solid-State Lighting Products.
4. Color Rendering Index within +/- 2%.

2000 LM, 3000K, CL FINISH TRIM



Angle	MeanCP	Lumens
0	2338	
5	2298	218
10	2257	
15	2201	619
20	2095	
25	1792	776
30	1068	
35	487	330
40	205	
45	49	52
50	4	
55	2	2
60	1	
65	0	1
70	0	
75	0	0
80	0	
85	0	0
90	0	

Trim: C7L1520DL30KMCLW
Frame: C7L20N1
Output lumens: 1998 lm
CCT¹: 3000K

Input Watts²: 39.5W

Efficacy: 50.6 lm/w

CRI⁴: 78

Spacing Criterion: 0.9

Certified Test Report No: F10023³

Single Unit Data		
Height to Lighted Plane	Initial Footcandles	Beam Diameter
5'	94	6'
6'	65	7'
7'	48	8'
8'	37	9'
9'	29	10'

Multiple Unit Data - RCR 2		
Spacing	Initial Footcandles	Watts/Sq. Ft.
5'	92.0	1.75
6'	60.4	1.15
7'	43.1	0.82
8'	35.9	0.68
9'	28.8	0.55

38'x38'x10' Room, Workplane 2 1/2' above floor, 80/50/20% Reflectances

Zonal Lumens & Percentages		
Zone	Lumens	%Luminaire
0-30	1613	80.7%
0-40	1944	97.3%
0-60	1998	100.0%
0-90	1998	100.0%

Ceiling	80%				70%				50%				30%				0%
	70	50	30	10	50	10	50	10	50	10	50	10	50	10	50	10	
Wall	70	50	30	10	50	10	50	10	50	10	50	10	50	10	50	10	
RCR	Zonal Cavity Method - Effective Floor Cavity Reflectance = 20%																
0	119	119	119	119	116	116	111	111	106	106	100						
1	114	111	109	107	109	105	105	102	101	99	94						
2	109	104	100	97	102	96	99	94	96	92	88						
3	104	98	93	89	96	88	94	87	91	86	83						
4	99	92	87	83	91	82	88	81	86	80	78						
5	94	86	81	77	85	76	84	76	82	75	73						
6	90	81	76	72	81	71	79	71	78	71	69						
7	86	77	71	67	76	67	75	67	74	66	65						
8	82	73	67	63	72	63	71	63	70	63	61						
9	78	69	63	60	68	60	67	59	67	59	58						
10	75	65	60	56	65	56	64	56	63	56	54						

1. Correlated Color Temperature within specs as defined in ANSLI_NEMA_ANSI C78.377-2008: Specifications for the Chromaticity of Solid-State Lighting Products.
2. Wattage controlled to within 5%.
3. Tested using absolute photometry as specified in LM79: IESNA Approved Method for the Electrical and Photometric Measurements of Solid-State Lighting Products.
4. Color Rendering Index within +/- 2%.



Philips Lightolier
 e: lol.webmaster@philips.com
 t: (508) 679-8131
 w: www.lightolier.com

C7L1520DL (W) May 10, 2012

Specifications are subject to change without notice.
 © Koninklijke Philips Electronics N.V., 2012. All rights reserved.

Job Information Type:

C7L1520DL (W)

Calculite LED 7" Downlight Wide Beam

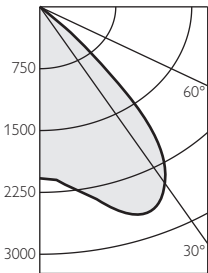
Correlated Color Temperature (CCT) Multipliers

2700K (x 0.92), **3000K** (x 1.00), **3500K** (x 1.07), **4000K** (x 1.14)

Reflector Finish Multipliers

CL (x 1.00), **CCL** (x 0.94), **CCD** (x 0.93), **CCZ** (x 0.76), **WH** (x 0.82) — **CL** & **CCD** finishes are tested. **CCL**, **CCZ** & **WH** are calculated.

3500 LM, 3000K, CL FINISH TRIM



Trim: C7L1520DL30KMCLW
Frame: C7L35N1
Output lumens: 3524 lm
CCT¹: 3000K
Input Watts²: 64.1
Efficacy: 55.0 lm/w
CRI⁴: 79
Spacing Criterion: 0.8
Certified Test Report No: F12023³

Angle	MeanCP	Lumens
5	2113	212
10	2274	
15	2465	706
20	2674	
25	2668	1211
30	2445	
35	2003	1184
40	1136	
45	233	281
50	21	
55	11	11
60	7	
65	4	4
70	3	
75	2	2
80	1	
85	0	0
90	0	

Single Unit Data		
Height to Lighted Plane	Initial Footcandles	Beam Diameter
5'	83	6'
6'	58	7'
7'	43	8'
8'	33	10'
9'	26	11'

Multiple Unit Data - RCR 2		
Spacing On Ctr.	Initial Footcandles	Watts/Sq. Ft.
5'	163	2.84
6'	107	1.86
7'	76	1.33
8'	64	1.11
9'	51	0.89

38'x38'x10' Room, Workplane 2 1/2' above floor, 80/50/20% Reflectances

Zonal Lumens & Percentages		
Zone	Lumens	%Luminaire
0-30	2129	59.0%
0-40	3313	91.7%
0-60	3604	99.8%
0-90	3611	100.0%

Ceiling	80%		70%		50%		30%		0%		
	70	50	30	10	50	10	50	10	50	10	0
Wall	70	50	30	10	50	10	50	10	50	10	0
RCR	Zonal Cavity Method - Effective Floor Cavity Reflectance = 20%										
0	119	119	119	119	116	116	111	111	106	106	100
1	113	110	108	105	108	104	104	100	100	97	93
2	107	102	98	94	100	93	97	91	94	89	85
3	101	94	89	85	93	84	90	82	88	81	78
4	95	87	81	77	86	76	84	75	82	74	72
5	90	81	74	70	80	69	78	69	76	68	66
6	85	75	68	64	74	64	73	63	71	63	61
7	80	70	63	59	69	58	68	58	66	58	56
8	75	65	58	54	64	54	63	54	62	53	52
9	71	61	54	50	60	50	59	49	58	49	48
10	67	57	50	46	56	46	55	46	54	46	44

1. Correlated Color Temperature within specs as defined in ANSL_NEMA_ANSLG C78.377-2008: Specifications for the Chromaticity of Solid State Lighting Products.
2. Wattage controlled to within 65%.
3. Tested using absolute photometry as specified in LM79: IESNA Approved Method for the Electrical and Photometric Measurements of Solid-State Lighting Products.
4. Color Rendering Index within +/- 2%.



Philips Lightolier
 e: lol.webmaster@philips.com
 t: (508) 679-8131
 w: www.lightolier.com

C7L1520DL (W) May 10, 2012

Specifications are subject to change without notice.
 © Koninklijke Philips Electronics N.V., 2012. All rights reserved.

Job Information Type: