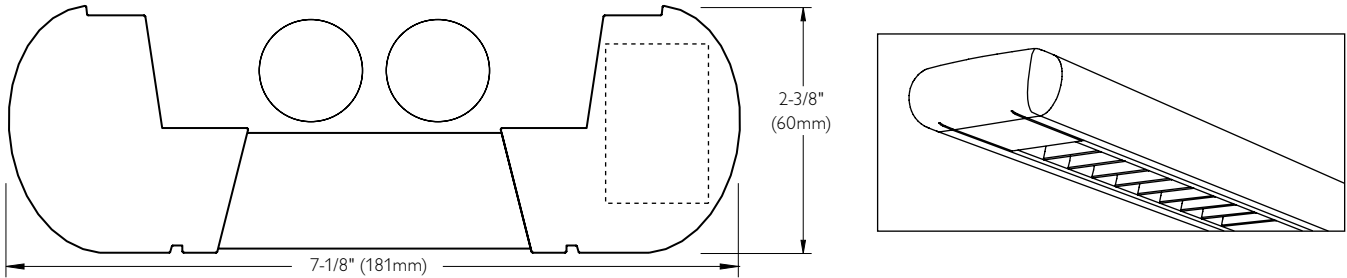


# LyteSpread C7

## Lighting Systems, T8, C716T02



### Ordering Information

Style	Lamps	Lower Optics	Upper Optics	Length	Wiring	Voltage	Ballast	Color & Finish
<b>C716</b>	<b>T02</b>						<b>E</b>	<b>W</b>
Direct/Indirect	T02 = 2-Lamps	P = Semi-Specular Louver S = Specular Louver	N = None D = 60% Down Kit U = 80% Up Kit	Enter the total run length in feet (4ft increments)	1 = 1 cct 2 = 2 cct 3 = 1 cct w/ Emergency cct 4 = 2 cct w/ Emergency cct 5 = 1 cct w/ Battery Pack 6 = 2 cct w/ Battery Pack 7 = 1 circuit Dimming	D = Dual 120v/277v 1 = 120v** 2 = 277v** 3 = 347v**	E = Standard Ballast	W = High Reflective White

\*\* Dimming and Battery Pack fixtures must be voltage specific.

### Housing

6063 T5 extruded aluminum. Fixture weighs 3.25 lb/ft. Molded high-impact polymer endcaps. Self-aligning joining system. Mitered aluminum extrusion intersections available in L, T or X configurations.

### Optical System

Semi-Indirect: Constructed of highly-specular aluminum, white prepainted metal and a concave perforated optical filter to produce a semi-indirect distribution.

Direct/Indirect: Constructed of highly-specular aluminum to produce a direct/indirect distribution. Aluminum parabolic louver has 29 cells per 4ft. Louvers are 1-1/8" deep and 1-1/2" on center. Variable Optics kits provide additional up or downlight where needed.

### Mounting

Aircraft cable gripper is tamper-resistant and provides infinite vertical adjustment capability. Aircraft cable, crimp and cable gripper independently tested to meet stringent safety requirements.

### Electrical

Factory pre-wired to section ends with quick-wire connectors. Ballast is electronic.

### Approvals

Certified to UL and CSA standards.

### Finish

High-quality powder coat. Available in white textured matte finish and a selection of other factory and customer specified colors. Consult factory for details.

Job Information	Type:
Job Name:	
Cat. No.:	
Notes:	

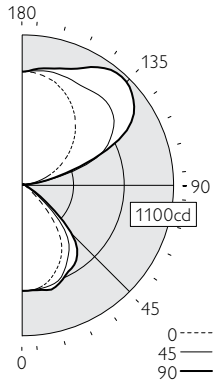
**PHILIPS**  
**LIGHTOLIER**

# LyteSpread C7

## Lighting Systems, T8, C716T02

**Photometry** Optics PN Semi-Specular Louver

**Candela Curve**



Report # 2100542  
 Filename C716T02PN.ies  
 Efficiency 85.4%  
 Peak Candela Value\* 1064 @ 138°  
 Peak to Zenith Ratio\* 1.3 : 1  
 \* Between 90-180° vertical angle  
 Meets RP-1-04 recommendations for VDT-Intensive spaces

**Candela Distribution**

Vertical Angle	Horizontal Angle				Zonal Lumens
	0	22.5	45	67.5	
0	773	773	773	773	773
5	770	769	770	770	772
15	723	736	760	784	791
25	626	660	699	732	729
35	470	547	582	653	674
45	180	282	370	483	490
55	25	41	76	153	151
65	7	11	12	24	27
75	0	4	6	8	7
85	0	0	3	3	1
90	0	0	0	0	0
95	32	93	63	78	56
105	138	356	379	375	321
115	273	491	680	784	770
125	410	571	810	949	989
135	536	646	855	1013	1062
145	643	721	841	978	1033
155	728	781	839	896	930
165	788	814	845	862	873
175	819	823	830	832	839
180	821	821	821	821	821

**Coefficients of Utilization (%)**

	Ceiling: 80				70				50				0
	70	50	30	10	70	50	30	10	50	30	10	0	
0 RCR	87	87	87	87	77	77	77	77	60	60	60	23	
1	80	76	74	71	71	69	66	64	54	52	51	21	
2	73	68	63	59	65	61	57	54	48	45	43	19	
3	67	60	54	50	60	54	49	43	40	37	37	17	
4	62	53	47	43	55	48	43	38	35	32	32	15	
5	57	48	42	37	51	43	38	35	31	28	28	13	
6	52	43	37	32	47	39	34	31	27	25	25	12	
7	48	39	33	28	43	35	30	28	25	22	22	11	
8	45	35	29	25	40	32	27	26	22	19	19	10	
9	42	32	26	22	38	29	24	24	20	17	17	9	
10	39	29	24	20	35	27	22	22	18	16	16	8	

Based on a floor reflectance of 0.2

**Avg. Luminance (cd/m<sup>2</sup>)**

Vertical Angle	Horizontal Angle		
	0	45	90
55	517	1571	3121
65	196	337	757
75	0	275	321
85	0	408	136

**Upgrades & Accessories**

Please indicate with check mark

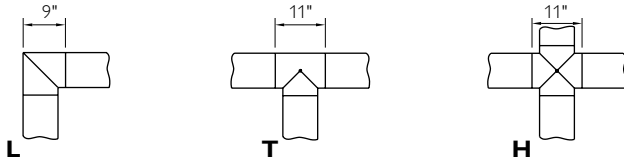
- Lamps Included       Daylight Harvesting System  
 Lamps Included and Installed       Dust Cover

**Mounting Hardware**

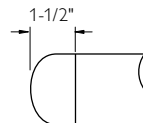
- Mount Type**  
 Consult separate mounting spec sheet for mount type options.
- Suspension Length**  
 Enter distance from ceiling to top of fixture in inches.

**Intersections**

Optional mitered aluminum extrusion intersections available in L, T or X configurations. Consult factory for assistance with ordering.



**Endcap**



**Modules**

Module length excludes endcaps. Nominal mount spacing for individually mounted modules with fixed position mounts.

Module	Mount Spacing
4ft	4' 2"
8ft	8' 2"
12ft	12' 2"



Philips Lightolier  
 e: lol.webmaster@philips.com  
 t: (508) 679-8131  
 w: www.lightolier.com

C716T02 September 7, 2011

Specifications are subject to change without notice.  
 © Koninklijke Philips Electronics N.V., 2011. All rights reserved.

**Job Information Type:**