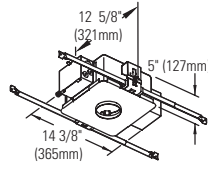




Calculite® Evolution Adjustable Accent **C3MRA**

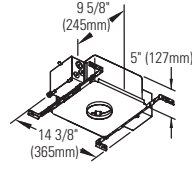
Non-IC Frame:

- C3LV**
- C3LVE1**
- C3LVE2**



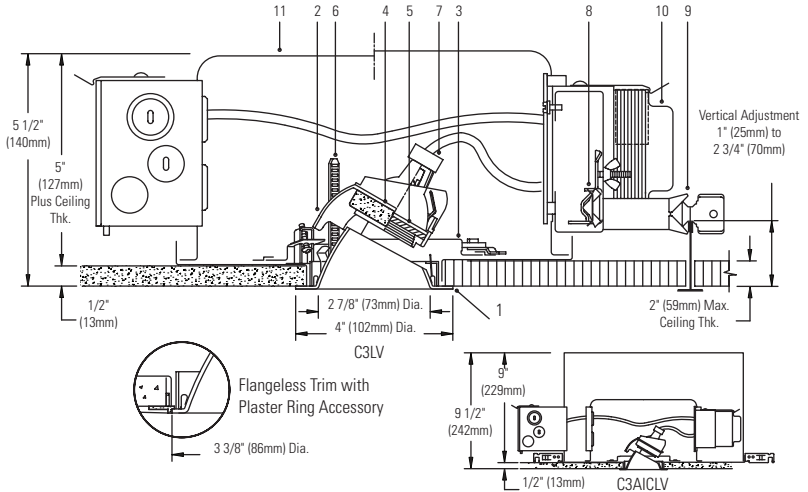
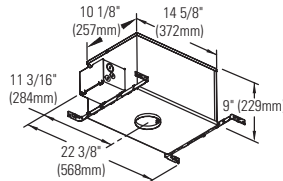
Non-IC AirSeal Frame:

- C3ALV**
- C3ALVE1**
- C3ALVE2**



IC AirSeal Frame:

- C3AICLV**
- C3AICLVE1**



Ceiling Cutout: 3 1/2" (130mm) Dia. **For Complete Fixture Order:** Trim Kit + Frame-In Kit. Each Sold Separately.

Trim Kit				Frame-In Kit			Lamp*
Cone Finish	White Flange	Polished Flange	Flangeless	C3LV	Non-IC	Magnetic 120/277V	42W-65W MR16 (12V)
Clear	C3MRA CLW	C3MRA CLP	C3MRA CLFT	C3LVE1	Non-IC	Electronic 120V	20W-65W MR16 (12V)
Comfort Clear Diffuse	C3MRA CCDW	C3MRA CCDP	C3MRA CCDFT	C3LVE2	Non-IC	Electronic 277V	20W-65W MR16 (12V)
Champagne Bronze	C3MRA CCZW	C3MRA CCZP	C3MRA CCZFT	C3ALV	Non-IC AirSeal®	Magnetic 120/277V	42W-65W MR16 (12V)
Gold	C3MRA GDW	C3MRA GDP	C3MRA GDFT	C3ALVE1	Non-IC AirSeal®	Electronic 120V	20W-65W MR16 (12V)
Matte White	C3MRA WHW	N/A	C3MRA WHFT	C3ALVE2	Non-IC AirSeal®	Electronic 277V	20W-65W MR16 (12V)
Specular Black	C3MRA BKW	C3MRA BKP	C3MRA BKFT	C3AICLV	IC AirSeal®	Magnetic 120V	20W-50W MR16 (12V)
				C3AICLVE1	IC AirSeal®	Electronic 120V	20W-50W MR16 (12V)

Note: Magnetic not recommended for residential or noise sensitive areas.

Features

- 1. Trim Kit Aperture Cone:** Low brightness; 0.040" aluminum, anodized; keyed to lamp support assembly for true aiming of lamp to prevent incorrect installation of cone. Hinged, and snaps on for easy tool-less installation. Self-flange in painted white or aperture matching polished flange. Flangeless trim used with Plaster Trim Ring accessory. Interchangeable with other 3" Evolution trims.
- 2. Trim Kit Vertical Adjustment Mechanism:** Die-cast aluminum. Built-in aperture shield blocks view into fixture. Provides 0°-45° vertical tilt up to 1" thick ceiling, less in thicker ceilings; lockable. EZ-Aim Helical Drive System provides fast and accurate hot aiming with Philips screwdriver.
- 3. Horizontal Adjustment Mechanism:** Die-form steel ring, matte black finish. Provides 362° horizontal stop, lockable with Philips screwdriver.
- 4. Lamp Support:** Die-form aluminum with knurled surface for easy gripping during relamping. Spring tension clips hold lamp and lens and allow fast snap-in, snap-out relamping. Matte black finish. Accepts up to two 2" diameter accessories.
- 5. Cover Glass:** High temperature, soft focus lens.
- 6. Thick Ceiling Ready Brackets:** Die-form steel, matte black finish. Adjust trim kit vertically to accommodate up to 2" thick ceiling, lockable.
- 7. Lampholder:** Procelain bi-pin socket. Pre-wired with No.18 AWG Teflon leads.
- 8. Frame Vertical Adjustment Mechanism (C3LV):** Accommodates mounting to virtually any ceiling system using pre-installed mounting bars, or 1/2" EMT tubing (by others). Single locking features secures all adjustments. Alignment holes and markings allow fixture to be pre-set prior to installation. Final adjustment can be made from below inside fixture.
- 9. Mounting Bars (C3LV):** Galvanized steel, 0.048"; pre-installed telescoping bars extend from 20" to 30" long and lock securely into position. Built-in locking tabs provide positive attachment to common T-bar systems. Self-centering feature simplified installation in 24" O.C. grid systems. Attaches to steel or wood joists without accessories.
- 10. Transformer:** Replaceable from below. Magnetic: 120V/277V 60 Hz. dual-voltage, core & coil. **Note:** Magnetic not recommended for residential or noise sensitive areas. Electronic: 120V or 277V 50/60 Hz., regulated lamp voltage, HPF, EMI and circuit protections, thermal auto-reset, quiet operation.

Features (cont.)

- 11. Frame-In Kit:** See Frame-In Kit specification sheets for more information. Non-IC and Non-IC AirSeal - Insulation must be kept 3" away from any parts of the luminaire and must not be placed above luminaire in a manner which will entrap heat. IC AirSeal - Luminaire may be in direct contact with thermal insulation.

Options and Accessories

- 2" dia. Color Filters/Specialty filters:** See ADF2/AF2 specification sheets
- 2" dia. Louver:** AL2HC
- Plaster Trim Ring (use with flangeless trim):** CA3FMR
- Chicago Plenum:** Consult Factory

Labels

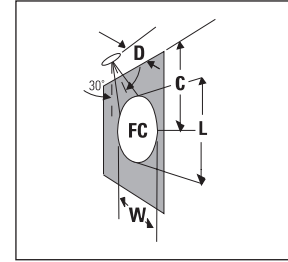
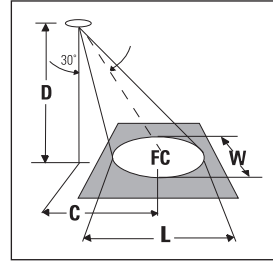
U.L. (Suitable For Damp Locations), I.B.E.W.
 *Lamp wattage restriction for Non-IC: 65W for up to 1" thick ceiling, 50W for ceiling thickness greater than 1" (up to 2").

Job Information	Type:
Job Name:	
Cat. No.:	
Lamp(s):	
Notes:	

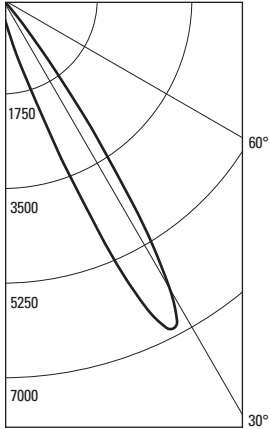
Lightolier a Genlyte company www.lightolier.com
 631 Airport Road, Fall River, MA 02720 • (508) 679-8131 • Fax (508) 674-4710
 We reserve the right to change details of design, materials and finish.
 © 2011 Genlyte Group LLC • F0711



(FC) is initial footcandles at center of beam. Beam length (L) and beam width (W) are to where the candlepower is reduced to 50% of the center beam candlepower. (C) is the distance to the center of the beam. Footcandles are based on photometry with luminaire, with lamp aimed at 30° from vertical.



CANDLEPOWER DISTRIBUTION



50W MR16 (12V) 15° Spot

ANGLE	WALL	AIMED 30° TOWARD WALL
0	198	
5	315	REFLECTOR TRIM: C3MRA CLW
10	552	GE HALOGEN LAMP
15	1211	120V ELECTRONIC TRANSFORMER
20	2993	LUMEN RATING = 750 LMS
25	6312	CBCP= 6857cd
30	6183	BEAM ANGLE = 13°
35	2602	
40	462	CERTIFIED TEST REPORT NO. 2712FR
45	51	DATE: Aug 29, 2004
50	27	**TEST-LITE**
55	8	
60	0	
65	2	
70	0	
75	0	
80	0	
85	0	
90	0	

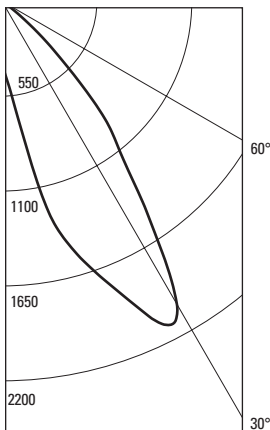
**30° Aiming Angle
Horizontal Surface**

D	C	FC	L	W
6'	3.5'	133	3.1'	2.7'
8'	4.6'	75	4.2'	3.6'
10'	5.8'	48	5.2'	4.5'
12'	6.9'	33	6.3'	5.4'
15'	8.7'	21	7.9'	6.7'

**30° Aiming Angle
Vertical Surface**

D	C	FC	L	W
2'	3.5'	260	3.5'	1.6'
3'	5.2'	117	5.3'	2.3'
4'	6.9'	66	7.0'	3.1'
6'	10.4'	29	10.5'	4.7'
8'	13.9'	17	14.0'	6.2'

CANDLEPOWER DISTRIBUTION



50W MR16 (12V) 25° Narrow Flood

ANGLE	WALL	AIMED 30° TOWARD WALL
0	354	
5	506	REFLECTOR TRIM: C3MRA CLW
10	921	GE HALOGEN LAMP
15	1441	LIGHTTECH #LET-75 TRANSFORMER
20	1712	LUMEN RATING = 800 LMS
25	2015	CBCP= 2114 cd
30	2027	BEAM ANGLE = 28°
35	1423	
40	991	CERTIFIED TEST REPORT NO. 2708FR
45	534	DATE: Aug 29, 2004
50	204	**TEST-LITE**
55	26	
60	2	
65	2	
70	2	
75	1	
80	2	
85	1	
90	1	

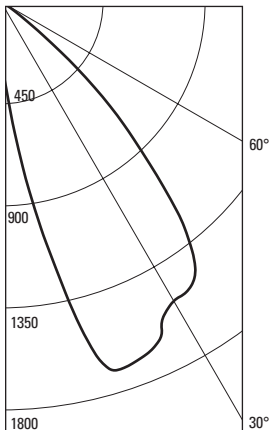
**30° Aiming Angle
Horizontal Surface**

D	C	FC	L	W
6'	3.5'	41	4.1'	3.5'
8'	4.6'	23	5.4'	4.6'
10'	5.8'	15	6.8'	5.8'
12'	6.9'	10	8.1'	5.9'
15'	8.7'	7	10.2'	8.6'

**30° Aiming Angle
Vertical Surface**

D	C	FC	L	W
2'	3.5'	91	4.9'	2.0'
3'	5.2'	40	7.4'	3.0'
4'	6.9'	23	9.8'	4.0'
6'	10.4'	10	14.7'	6.0'
8'	13.9'	6	19.6'	8.0'

CANDLEPOWER DISTRIBUTION



50W MR16 (12V) 40° Flood

ANGLE	WALL	AIMED 30° TOWARD WALL
0	257	
5	493	REFLECTOR TRIM: C3MRA CLW
10	1012	GE HALOGEN LAMP
15	1608	LIGHTTECH #LET-75 TRANSFORMER
20	1697	LUMEN RATING = 800 LMS
25	1649	CBCP= 1703 cd
30	1524	BEAM ANGLE = 35°
35	1487	
40	1211	CERTIFIED TEST REPORT NO. 2709FR
45	767	DATE: Aug 29, 2004
50	345	**TEST-LITE**
55	86	
60	10	
65	2	
70	2	
75	2	
80	2	
85	2	
90	2	

**30° Aiming Angle
Horizontal Surface**

D	C	FC	L	W
6'	3.5'	40	5.2'	4.4'
8'	4.6'	23	7.0'	5.8'
10'	5.8'	15	8.7'	7.3'
12'	6.9'	10	10.4'	8.7'
15'	8.7'	6	13.0'	10.9'

**30° Aiming Angle
Vertical Surface**

D	C	FC	L	W
2'	3.5'	102	7.2'	2.5'
3'	5.2'	45	10.8'	3.8'
4'	6.9'	25	14.4'	5.0'
6'	10.4'	11	21.6'	7.6'
8'	13.9'	6	28.8'	10.1'

Job Information **Type:**

Lightolier a Genlyte company www.lightolier.com
 631 Airport Road, Fall River, MA 02720 • (508) 679-8131 • Fax (508) 674-4710
 We reserve the right to change details of design, materials and finish.
 © 2011 Genlyte Group LLC • F0711