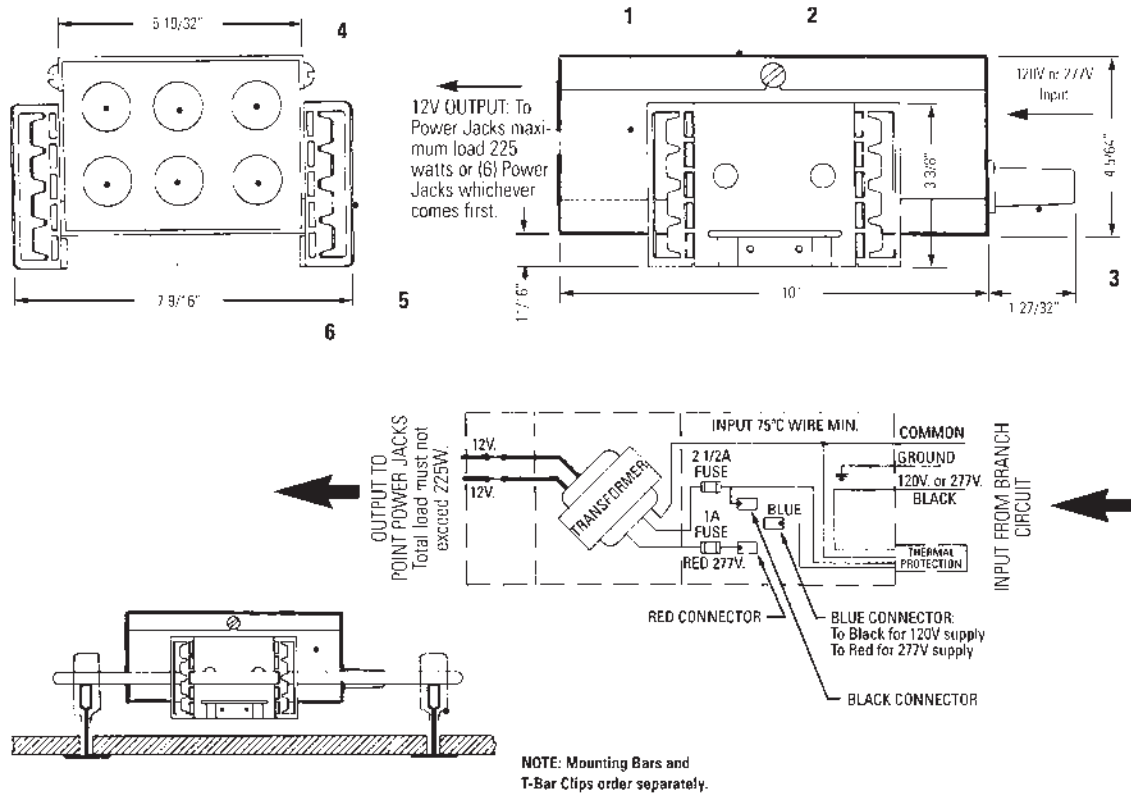


## Lytespan accent lighting system LyteJacks 225W Remote transformer



Catalog no.	Mounting	Accessories (order separately)	
		Catalog no.	Description
8609	Recess in accessible ceiling. Insulation must be kept 3" away from fixture sides and wiring compartment; and must not be placed above fixture so as to entrap heat.	1950	18" Mounting bars (set of 2)
		1951	27" Mounting bars (set of 2)
		1956	T-Bar clips (set of 4)

### Features

- Splice and transformer housing:** 20 ga. (.036) steel.
- Removable top:** 20 ga. (.036) steel.
- Thermal protector**
- Open hole:** Used for first connection to Point Power Jack.
- Mounting bar holders (2):** Use with optional mounting bars.
- 7/8" Knock outs (5):** Use for additional connection to Point Power Jacks

### Electrical

Low voltage magnetic transformer, 120V or 277V input, 12V output, powers any Point Power Jack fixture. The transformer is limited to a total load of 225W or (6) Point Power Jacks, whichever is fulfilled first. Thermally protected. Type Non-IC. Provided with replaceable primary fuses. Use only dimmers specially rated for inductive loads (low voltage fixtures equipped with magnetic transformers) such as Lightolier Lytemode and Scenist systems and Lightolier dimmers carrying the suffix VA.

### Labels

UL; I.B.E.W.

Job Information	Type:
Job Name:	
Cat. No.:	
Notes:	

**PHILIPS**  
**LIGHTOLIER**