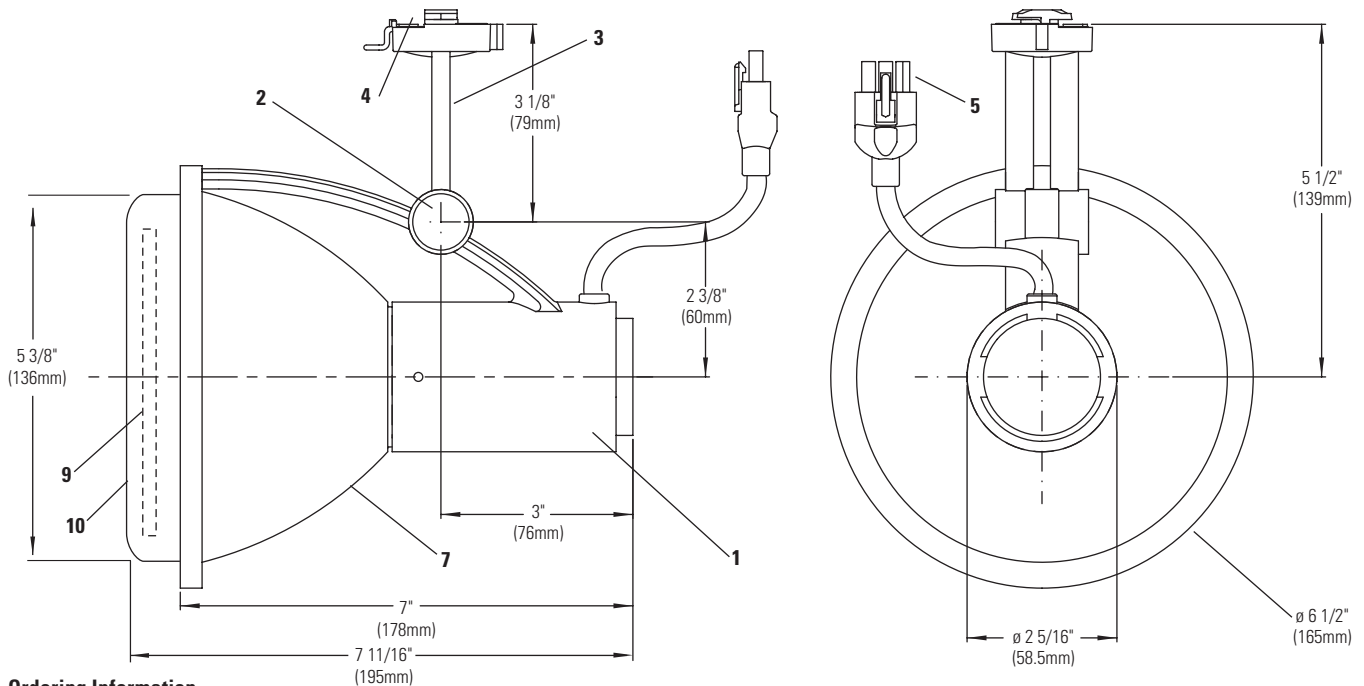


Lytespan® Track Lighting System **8317U**

Page 1 of 1

PowerArc™ Modular Metal Halide 70W, 100W ED-17 Spot Enclosed
For Unprotected or Protected Lamp



Ordering Information

Catalog No.	Finish	Track Mountings	Ballast Module	Lamp	Reflectors
8317UWH 8317UBK 8317UAL	Matte White Matte Black Metallic Aluminum	All Lytespan® Track systems and Multipoint. All PowerArc™ Modular canopies, extension wands, mounting brackets or pipe clamps. Not compatible with ProSpec® Track or ATOM®.	Use one of: 83B70E 83B70SE 83B10E 83CY70E	ED-17 or E-17 Clear, Unprotected or Protected, Ceramic Metal Halide 100W Max.	Use one of: 83ED17RNS 83ED17RS 83ED17RF 83ED17RWF

Features

- Housing:** Die-cast aluminum body.
- Vertical Pivot:** 0-90° vertical adjustment.
- Horizontal Pivot:** Die-cast track adapter with infinite rotation.
- Track Attachment Fitting:** Molded polycarbonate rotates into track.
- Power Connector:** 5kv rated with insulated pins. Connects to ballast module. Keyed for polarity.
- Reflector:** (not shown) Interchangeable reflectors available to allow for desired precise beam spread without the need of additional lenses.
- Shade:** Die-cast aluminum. Accepts Accessory Holders.
- Socket:** (not shown) 5kv pulse rated ceramic body socket with nickel plated lamp contacts.
- Protective Glass:** 1/8" thick tempered glass. Can be replaced with filter.
- Accessory Holder:** steel holds (2) filters (1) piece of glass must always be installed.

Reflectors sold separately. See 83ED17R NS/S/F/WF specification sheets.

Accessories

ADF4 (4 3/4" dia.)	Color Filters	} Compatible with 83B70E only
AF4 (4 3/4" dia.)	Diffusion Filters	
AL4HC	Hex Cell Louver	
83EW18WH, BK, AL	18" Extension Wand	
83EW48WH, BK, AL	48" Extension Wand	
83EC72WH, BK	6' Extension Cord	
83PCWH, BK	Pipe Clamp	
83MPTWH, BK	Mounting Bracket	

Finish

All painted finishes are baked enamel.

Electrical

See ballast module spec sheet.

Labels

UL, cUL

Job Information

Type:

Job Name:

Cat. No.:

Lamp(s):

Notes: