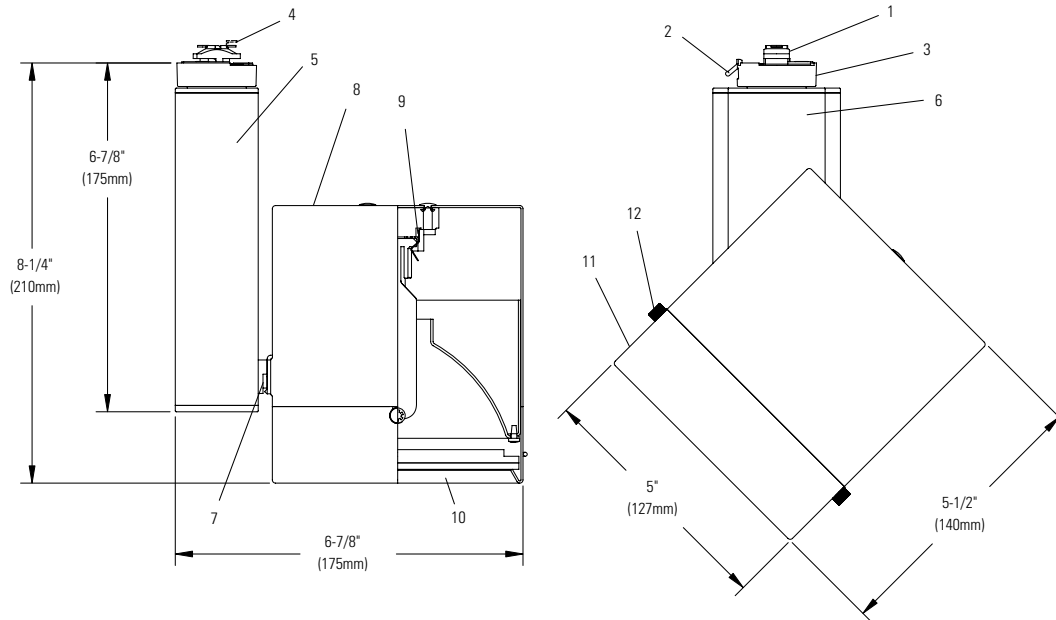


## Lytespan, Mini HID Cylinder 70W T6 CMH (M98)

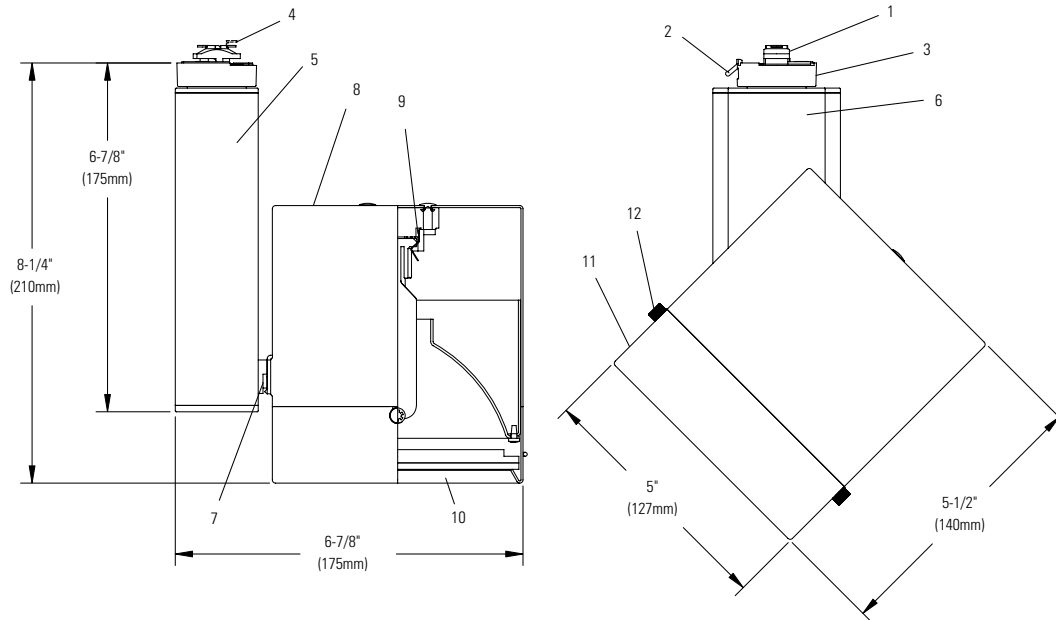


### Ordering Information

Catalog No.	Finish	Lamp	Reflectors (Sold Separately)
8122WH 8122BK 8122AL	White Black Aluminum	70W T6 CMH (M98)	<b>MHT6RS</b> Clear Spot Reflector <b>MHT6RNF</b> Clear Narrow Flood Reflector <b>MHT6RF</b> Clear Flood Reflector <b>MHT6RSCCZ</b> Champagne Bronze Spot Reflector <b>MHT6RNFCCZ</b> Champagne Bronze Narrow Flood Reflector <b>MHT6RFCCZ</b> Champagne Bronze Flood Reflector <b>MHT6RSWRM</b> Incandescent Warming Spot Reflector <b>MHT6RNFWRM</b> Incandescent Warming Narrow Flood Reflector <b>MHT6RFWRM</b> Incandescent Warming Flood Reflector

Job Information	Type:
Job Name:	
Cat. No.:	
Notes:	

## Lytespan, Mini HID Cylinder 70W T6 CMH (M98)



### Features

- 1. Track attachment fitting:** Molded polycarbonate, rotates into track. Integral polarity keyguard.
- 2. Push tab:** Molded polycarbonate white, black or gray finish. Detaches unit.
- 3. Track adaptor housing:** Die-cast aluminum.
- 4. Movable contact:** Solid brass. Extends for connection to 2nd circuit in Advent track.
- 5. Ballast housing:** Extruded housing with die-cast aluminum end caps.
- 6. Ballast:** High Power Factor metal halide electronic ballast. Thermally protected, 0.64A maximum input current, maximum 77W input power.
- 7. Pivot mounts:** Allows for 350° horizontal and 180° vertical rotation with tensioned mounts for controlled aim.
- 8. Housing:** 0.04" (1.02mm) aluminum.
- 9. Lampholder:** Bi-pin G12 single-ended base. 5kV (750V) pulse rated porcelain body socket with nickel-plated contacts. 18 AWG silicone leads with fiberglass outer sleeve hidden inside of housing.
- 10. Protective glass:** 0.13" (3.18mm) tempered glass.
- 11. Housing cover:** 0.04" (1.02mm) aluminum.
- 12. Knobs:** Steel painted knurled knob.

### Accessories (Holds one accessory only)

**Diffusion/ Special Filters:** AF4 series

**Color Filters:** ADF4 series

**Louwer (Hex Cell):** AL4HC

### Markings

cCSAus Certified for dry locations only.

### Mounting

On Monopoint, Multipoint, recessed track, sloped ceiling adapter, Basic, Radius and Advent track systems only. Ceiling and horizontal or vertical wall mounted. Not compatible with ProSpec track system.

### Finish

All painted finishes are baked powder or enamel.

Job Information	Type:
-----------------	-------

**PHILIPS**  
**LIGHTOLIER**

## Lytespan, Mini HID Cylinder 70W T6 CMH (M98)

### MHT6RF

#### Aiming Angle:

**L** Beam Length  
**W** Beam Width  
**C** Distance to center beam  
**D** Distance  
**A** Aiming Angle  
**FC** Footcandles

**L** and **W** are the outer points where the candle power drops to 50% of the maximum. **FC** are the initial footcandles at the center of the beam.

Lamp data shown is typical. Consult lamp manufacturers for availability and performance.  
 CBCP = Center Beam Candle Power.

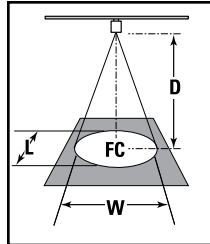
#### Flood Reflector

with 70W T-6 Master Color Ceramic Metal Halide Philips (Clear) Lamp

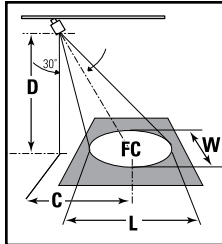
#### Lamp

Beam Spread (To 50% CBCP)	CBCP	Rated Life (Hrs.)
40°	6,994	9000 to 15,000

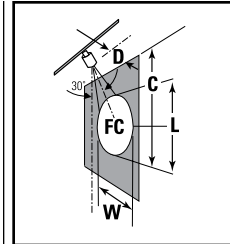
#### 0°



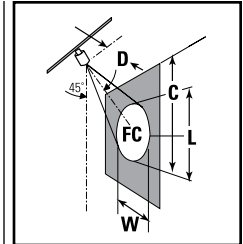
#### 30° Horizontal



#### 30° Vertical



#### 45° Vertical



### Metal Halide T-6 Reflector Flood

#### Lamp

D	C	FC	L	W
2'	3.5'	219	9.7'	2.9'
3'	5.2'	97	14.5'	4.4'
4'	6.9'	55	19.3'	5.8'
5'	8.7'	35	24.2'	7.3'

#### Lamp

D	C	FC	L	W
3'	3.0'	275	5.0'	3.1'
4'	4.0'	155	6.7'	4.1'
5'	5.0'	99	8.4'	5.1'
6'	6.0'	69	10.1'	6.2'

#### Aiming Angle:

**L** Beam Length  
**W** Beam Width  
**C** Distance to center beam  
**D** Distance  
**A** Aiming Angle  
**FC** Footcandles

**L** and **W** are the outer points where the candle power drops to 50% of the maximum. **FC** are the initial footcandles at the center of the beam.

Lamp data shown is typical. Consult lamp manufacturers for availability and performance.  
 CBCP = Center Beam Candle Power.

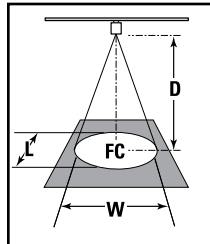
#### Narrow Flood Reflector

with 39W T-6 Master Color Ceramic Metal Halide Philips (Clear) Lamp

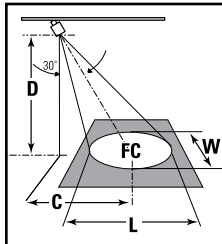
#### Lamp

Beam Spread (To 50% CBCP)	CBCP	Rated Life (Hrs.)
21°	19,929	12,000

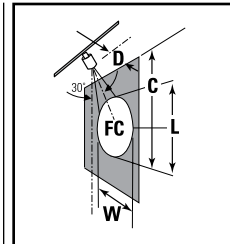
#### 0°



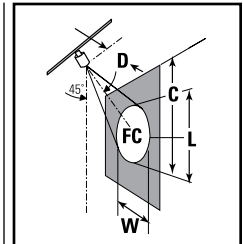
#### 30° Horizontal



#### 30° Vertical



#### 45° Vertical



### Metal Halide T-6 Narrow Flood

#### Lamp

D	C	FC	L	W
2'	5.2'	277	5.0'	2.2'
3'	6.9'	156	6.6'	3.0'
4'	8.7'	100	8.3'	3.7'
5'	10.4'	69	9.9'	4.4'

#### Lamp

D	C	FC	L	W
5'	5.0'	282	3.8'	2.6'
6'	6.0'	196	4.6'	3.1'
7'	7.0'	144	5.4'	3.7'
8'	8.0'	110	6.1'	4.2'

Job Information Type:

## Lytespan, Mini HID Cylinder 70W T6 CMH (M98)

### MHT6RS

#### Aiming Angle:

**L** Beam Length  
**W** Beam Width  
**C** Distance to center beam  
**D** Distance  
**A** Aiming Angle  
**FC** Footcandles

**L** and **W** are the outer points where the candle power drops to 50% of the maximum. **FC** are the initial footcandles at the center of the beam.

Lamp data shown is typical. Consult lamp manufacturers for availability and performance.  
 CBCP = Center Beam Candle Power.

#### Spot Reflector

with 39W T6 Master Color Ceramic Metal Halide Philips (Clear) Lamp

Lamp	Beam Spread (To 50% CBCP)	CBCP	Rated Life (Hrs.)	0°				30° Horizontal				30° Vertical				45° Vertical						
				D	FC	L	W	D	C	FC	L	W	D	C	FC	L	W	D	C	FC	L	W
70W T6 CMH	10°	52,142	9,000	15'	232	2.6'	2.6'	10'	5.8'	339	2.3'	2.0'	6'	10.4'	181	4.3'	2.1'	8'	8.0'	288	2.8'	2.0'
				20'	130	3.5'	3.5'	15'	8.7'	151	3.5'	3.0'	8'	13.9'	102	5.7'	2.8'	12'	12.0'	128	4.2'	3.0'
				25'	83	4.4'	4.4'	20'	11.5'	85	4.7'	4.0'	10'	17.3'	65	7.2'	3.5'	14'	14.0'	94	4.9'	3.5'
				30'	56	5.2'	5.2'	25'	14.4'	54	5.8'	5.1'	12'	20.6'	45	8.6'	4.2'	16'	16.0'	72	5.6'	4.0'

**Note:** For Champagne Bronze (CCZ), multiply FC values by 0.64.  
 For Incandescent Warm (WRM), multiply FC values by 0.85.

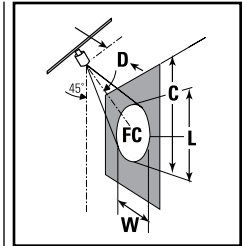
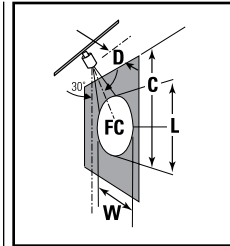
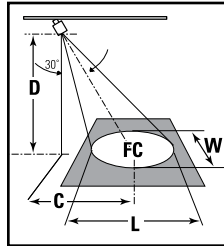
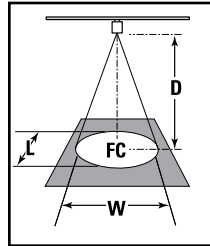
### Metal Halide T-6 Reflector Spot

0°

30° Horizontal

30° Vertical

45° Vertical



Job Information Type:

**PHILIPS**  
**LIGHTOLIER**