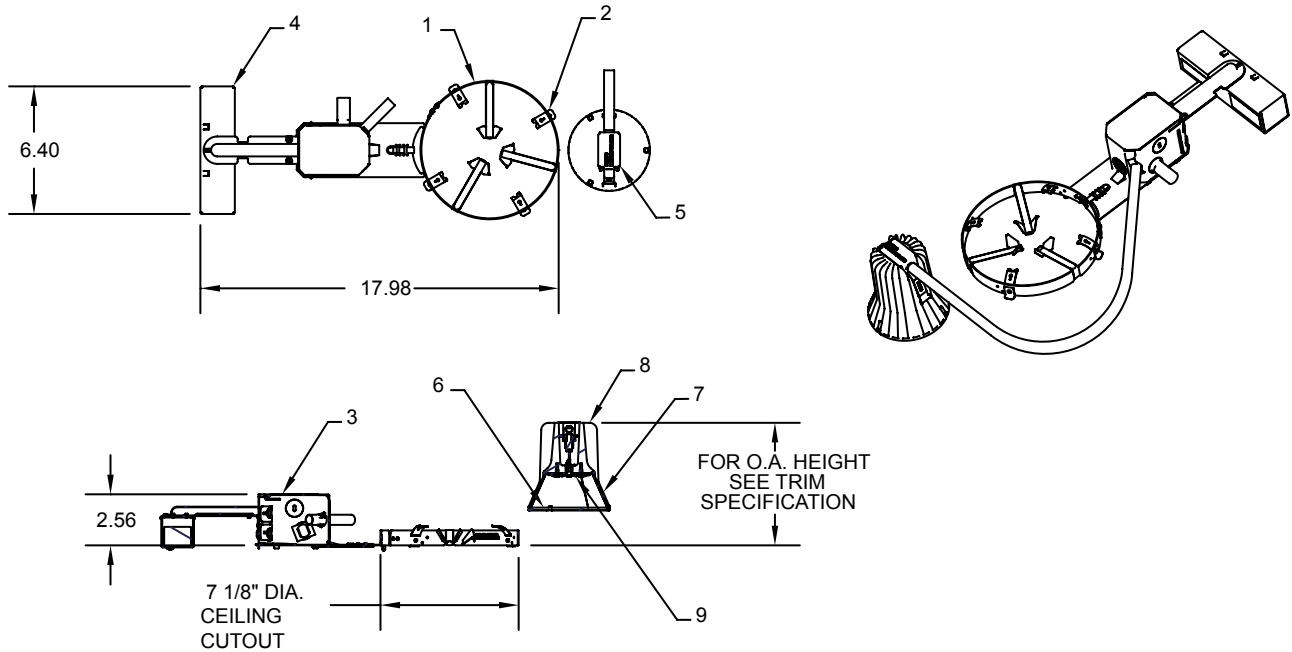


1100LED-REM

Lytecaster, 6 3/4", LED, Non-IC, Remodeler

Page 1 of 4



Trim compatibility for the 1100LED09R series frame-in-kits

LED Remodeler sku	Anodized reflector	Cone	Satin cone	Baffle	Crossblade	Enclosed diffusers	Wall washers	Open wet location
1100LED09R27	1143	1112	1108	1105	1132	1121	1195	1184WH
1100LED09R35	1144	1112NM	1108NM	1105NM		1124	1196	1184CD
	1144CD	1113	1110	1105VWH		1126	1196CD	
	1145	1113NM	1110NM	1105BNM		1128		
	1146	1113BK		1176		1134		
	1146CD	1113BKNM		1176WH		1177SH		
		1113CD				1178SH		
		1113CDNM				1190		
		1113WH						

See Page 2 for Energy Star compatible trims

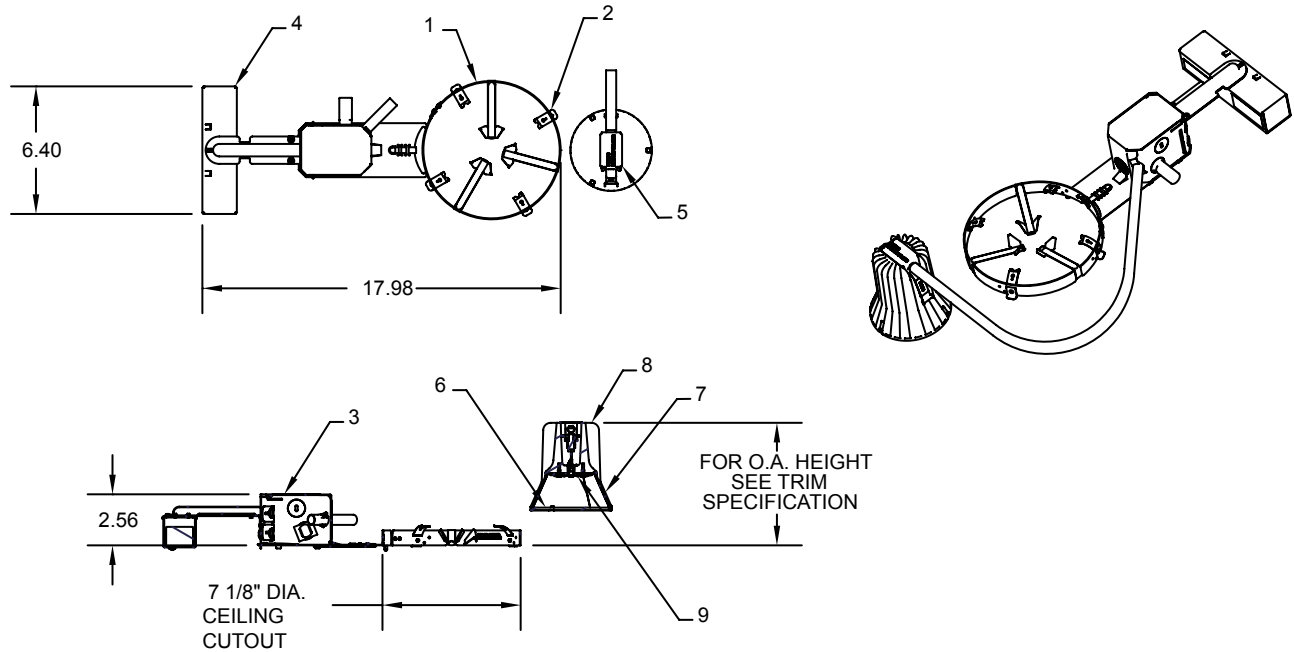
Job Information	Type:
Job Name:	
Cat. No.:	
Notes:	

PHILIPS
LIGHTOLIER

1100LED-REM

Lytecaster, 6 3/4", LED, Non-IC, Remodeler

Page 2 of 4



Energy Star Lytecaster LED Uniframe trim compatibility chart

The following trims meet the necessary requirements to obtain a Commercial Energy Star listing when used with the 1100LED series of frame-in kits



6 3/4" Trims (1100 series) w/1100LED frames

1105	1110NM	1113CD	1144CDs	1190
1105NM	1112	1113CDNM	1145	
1105BNM	1112NM	1113WH	1146	
1105WH	1113	1126	1146CD	
1108	1113NM	1132	1176WH	
1108NM	1113BK	1143	1184CD	
1110	1113BKNM	1144	1184WH	

Job Information Type:

PHILIPS
LIGHTOLIER

1100LED-REM

Lytecaster, 6 3/4", LED, Non-IC, Remodeler

Page 3 of 4

Features

- 1. Uniframe Mounting Ring:** .032(#22ga)thick Galvanized Steel. Accommodates existing ceilings up to 2" thick. Attaches securely to any type of ceiling material without tools using (3) mounting straps. Includes adhesive backed aperture template.
- 2. Trim Clips:** "Push In / Twist Out" clips hold reflector flush to ceiling.
- 3. Junction Box:** 2 1/2" x 2 1/2" x 3 1/2" (21cu. in.) .032 (#22 ga) galvanized steel. U.L. listed for 90° C supply wire. Integral cable clamps permit attachment of non-metallic (#12 or #14 ga) Romex™ without tools or additional connectors. Attaches to mounting ring without tools.
- 4. Power supply/enclosure:** Factory wired electronic delivery. (See electrical section for specifications) Enclosed in a 22ga. galvanized steel housing.
- 5. Top heat sink cover:** Tool free snap on enclosure bracket. 22 ga. component houses the driver secondary tool free wire connector.
- 6. Lens:** Solite Glass lens has high transmission value with slight texture to provide a smooth consistent beam distribution.
- 7. Optical mixing chamber:** Designed to provide a spacing ratio of .9 (60° beam) when installed in standard Lytecaster trims. Optic design provides less glare than standard PAR lamps.
- 8. Thermal management:** Heat sink was developed using the latest Computational Fluid DynamicSoftware. This optimized thermal design provides a 50,000 hour lifetime at 70% lumen maintenance. Cast aluminum heat sink is coated with RoHS compliant coating (trivalent chromate) to resist corrosion in damp or wet environments.
- 9. LED board:** Utilizes Philips Lumileds LED's.
- 10. Thermal protector:** Meets NEC and UL Requirements. Do not install insulation above or within 3" (76 mm) of any part of the luminaire.

Electrical

Electronic power supply: RoHS compliant Class 2 power unit for use in a damp or dry location (Outdoor Type1 IP66). Class A sound rated unit tolerates sustained open circuit and short circuit output conditions without damage. Complies with FCC rules per Title 47 CFR Part 15 Non-Consumer (Class A) for EMI/RFI (conducted and radiated) at full load.

Input Voltage	Input Frequency	Max Input Current	Max Input Power	Max THD	Power Factor	Minimum Operating Temperature
120V	50/60Hz	0.16	20W	< 20%	>.9	-20° C

Labels

UL Wet Location Classified
ENERGY STAR® qualified for use with specific finishing trims (see p 2). 5 Year Warranty.
cULus Listed. Suitable for Damp Locations. I.B.E.W.



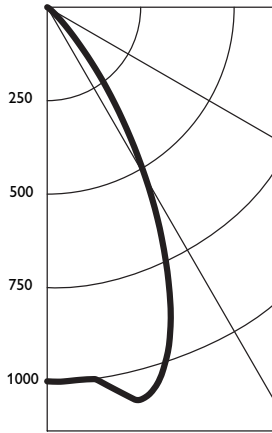
Job Information Type:

PHILIPS
LIGHTOLIER

1100LED-REM

Lytecaster, 6 3/4", LED, Non-IC, Remodeler

Lytecaster LED, 2700K Remodeler



Angle	Mean CP
0	1001
5	1001
10	1038
15	1068
20	955
25	752
30	525
35	317
40	154
45	63
50	22
55	9
60	3
65	1
70	0
75	0
80	0
85	0
90	0

Catalog No: 1100LED09R271 / 1113

Report No.: F10146

Total Fixture Lumens: 995 lms

Color Temp: 2700K

Input Watts: 20.6W

Luminaire Efficacy: 48 lm/w

Spacing Criterion: 1.00

CRI: 82

		Coefficients of utilization									
		80%			70%			50%			0%
Ceiling	Wall	70	50	30	70	50	30	50	30	10	0
RCR		Zonal Cavity Method - Effective Floor Reflectance = 20%									
Room Cavity Ratio		119	119	119	116	116	116	111	111	111	100
1		114	111	108	111	109	107	105	103	101	94
2		108	103	99	106	102	98	98	95	93	87
3		103	96	92	101	95	91	92	89	86	81
4		98	90	85	96	89	84	87	83	79	76
5		93	85	79	91	84	78	82	77	73	71
6		88	79	73	87	79	73	77	72	68	66
7		84	75	69	82	74	68	73	68	64	62
8		80	70	64	79	70	64	69	64	60	58
9		76	66	61	75	66	60	65	60	56	55
10		72	63	57	71	62	57	62	57	53	51

Zonal lumens and percentages

Zone	Lumens	%Lamp	%Fixt
0-30	731	N/A	74
0-40	930	N/A	94
0-60	993	N/A	99
0-90	994	N/A	100

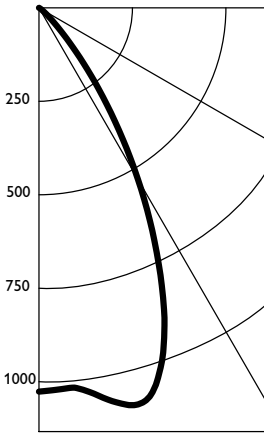
Single Unit Data

Height to Lighted Plane	Initial Center Beam Foot-Candles	Beam Diameter*
6'	28	6
7'	20	7
8'	21	8

Tested using absolute photometry as specified in LM79: IESNA Approved Method for the Electrical and Photometric Measurements of Solid-State Lighting Products.

*Beam diameter is where foot-candles drop to 50% of maximum.

Lytecaster LED, 3500K Remodeler



Angle	Mean CP
0	1027
5	1020
10	1064
15	1090
20	973
25	759
30	529
35	318
40	156
45	63
50	24
55	9
60	3
65	1
70	0
75	0
80	0
85	0
90	0

Catalog No: 1100LED09R351 / 1113

Report No.: F10142

Total Fixture Lumens: 1010 lms

Color Temp: 3500K

Input Watts: 20.6W

Luminaire Efficacy: 49 lm/w

Spacing Criterion: 0.98

CRI: 82

		Coefficients of utilization									
		80%			70%			50%			0%
Ceiling	Wall	70	50	30	70	50	30	50	30	10	0
RCR		Zonal Cavity Method - Effective Floor Reflectance = 20%									
Room Cavity Ratio		119	119	119	116	116	116	111	111	111	100
1		114	111	108	111	109	107	105	103	101	94
2		108	103	99	106	102	98	98	95	93	87
3		103	96	92	101	95	91	92	89	86	81
4		98	90	85	96	89	84	87	83	79	76
5		93	85	79	91	84	78	82	77	74	71
6		88	79	73	87	79	73	77	72	69	66
7		84	75	69	82	74	68	73	68	64	62
8		80	70	64	79	70	64	69	64	60	58
9		76	66	61	75	66	60	65	60	56	55
10		72	63	57	71	62	57	62	57	53	52

Zonal lumens and percentages

Zone	Lumens	%Lamp	%Fixt
0-30	743	N/A	74
0-40	944	N/A	94
0-60	1009	N/A	99
0-90	1010	N/A	100

Single Unit Data

Height to Lighted Plane	Initial Center Beam Foot-Candles	Beam Diameter*
6'	29	6
7'	21	7
8'	16	8

Tested using absolute photometry as specified in LM79: IESNA Approved Method for the Electrical and Photometric Measurements of Solid-State Lighting Products.

*Beam diameter is where foot-candles drop to 50% of maximum.



Philips Lightolier
 e: lol.webmaster@philips.com
 t: (508) 679-8131
 w: www.lightolier.com

1100LED-REM September 1, 2011

Specifications are subject to change without notice.
 © Koninklijke Philips Electronics N.V., 2010. All rights reserved.

Job Information Type: